

DIRECTIONS TO DBSA

It is not necessary to arrange for parking - there is ample parking in front of the main building and Vulindlela.

Visitors will have to register at the reception on the left, after which they will be directed to the main building or Vulindlela . Laptops will have to be checked by Security. Reception: +27 11 313 3500

FROM PRETORIA

- Take the N1/Ben Schoeman Highway to Johannesburg. (18.6 km)
- Take the SAMRAND Off-ramp (750m).
- At the traffic lights (1st set) turn right (West) into Samrand Avenue. Pass the next set of traffic lights (2nd set, which would take you back onto the N1 highway) (750m).
- At the 3rd set of traffic lights, turn left into RIETSPRUIT Road and proceed in a southerly direction (1.2 km).
- Follow the road to a T-Junction, and turn left into Rooihuiskraal Road (750m).
- At the T-junction traffic lights, (c/o Rooihuiskraal and Lever Roads) turn left into Lever Road - it will lead you to the DBSA Building (300m).

FROM JOHANNESBURG

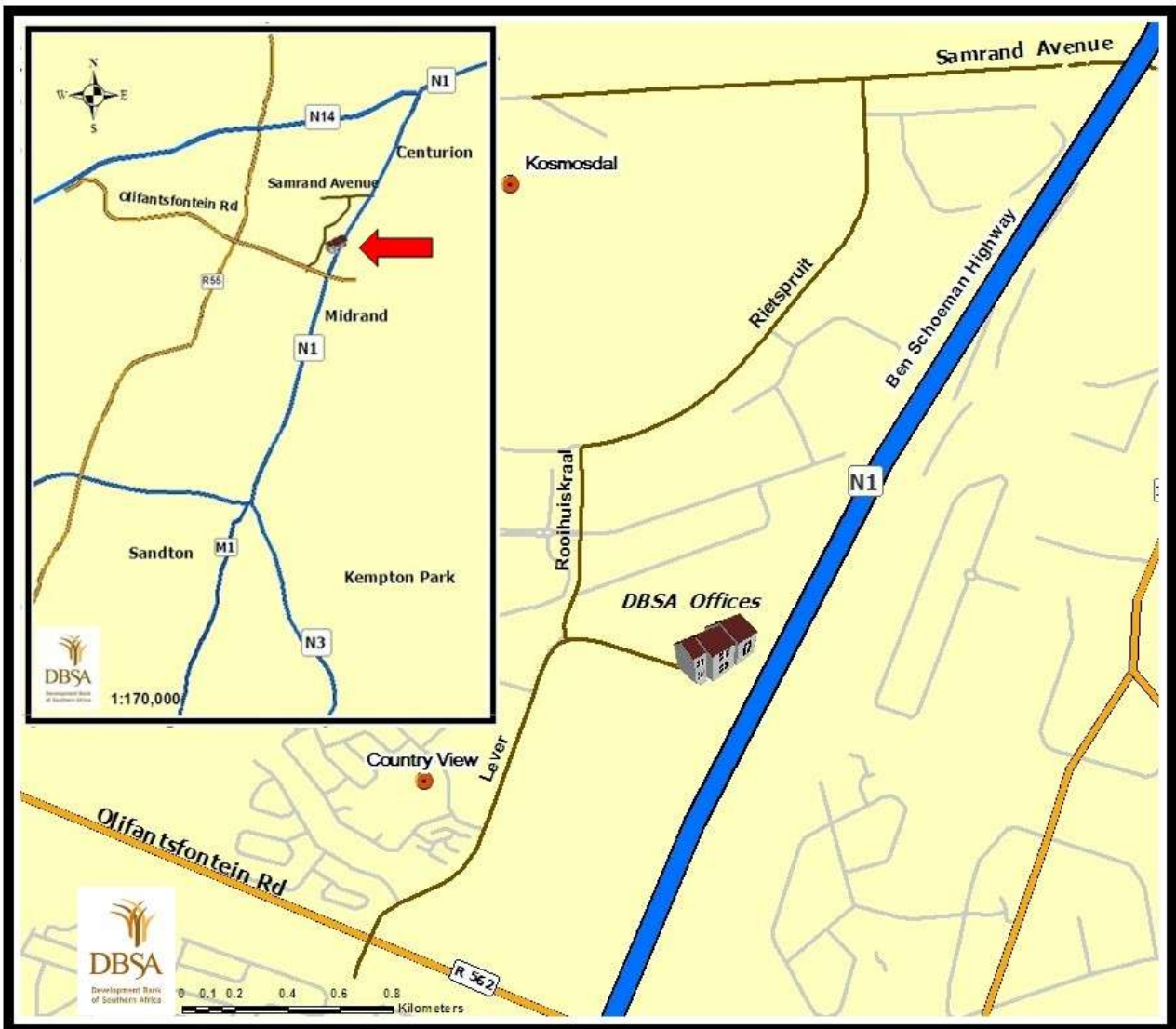
- Take the N1/Ben Schoeman Highway to Pretoria.
- Take the OLIFANTSFONTEIN Off-ramp. The Midrand Protea Hotel is a 'landmark' on the left hand side of the highway, just as you get to the Off-ramp (700m).
- At the traffic lights (1st set) turn left (west) into the R562 (1.0 km).
- At the next set of traffic lights (2nd set) turn right into LEVER Road This road takes you to the DBSA Building. You will pass through one stop street and one traffic light; in both cases with a road T-ing in from the left; carry straight on in both cases(2.1 km).

FROM LANSERIA AIRPORT

- Head southwest on Airport Road towards Ashanti Road (600m).
- Turn left at Ashanti Road (1.6 km).
- Turn left at Malibongwe Drive/R512 (4.6 km).
- Turn left to merge onto the N14 (20.7 km).
- Take exit 317 for R55 towards Sandton/Pretoria West (750m).
- Merge onto N14 (signs for R55/Sandton) (25 m).
- Turn Right at Johannesburg Pretoria Rd/R55. Continue on R55 (5.4 km).
- Slight left at Summit Road/R562 (3.1 km).
- Turn left at the Lever Road traffic light. This will take you to the DBSA Building. You will pass a stop street as well as a traffic. In both cases go straight (2.1 km).

Phone: (011) 313 3500

GPS Coordinates E: 28 d 08.175440 m S: -25 d 56.344819 m



1258 Lever Road, Midrand, 1682, +27 11 313 3500