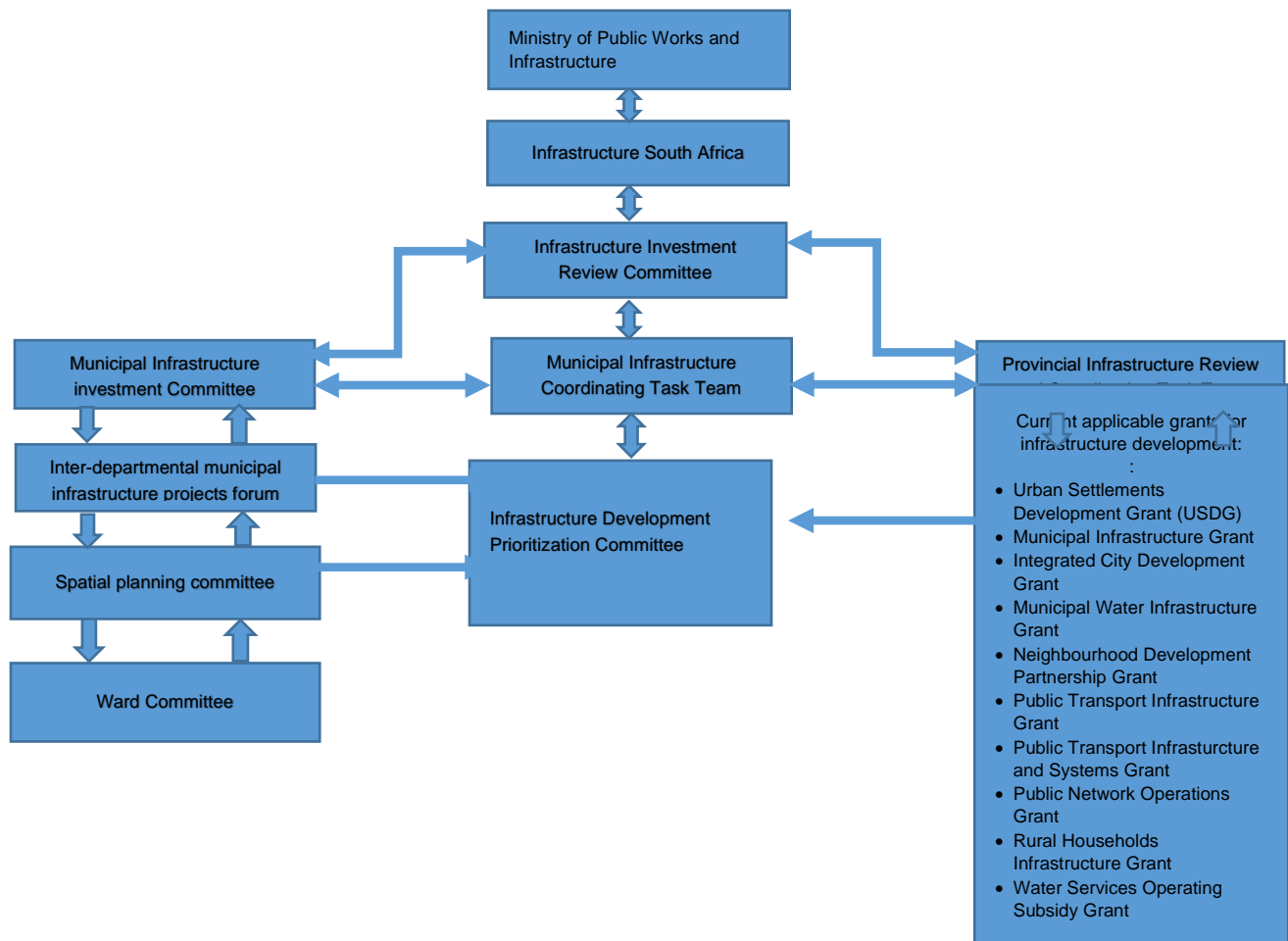


## PROPOSED INTEGRATED MODEL FOR DECISION MAKING TO PRIORITIZE INFRASTRUCTURE PROJECTS AT MUNICIPAL LEVEL



- **Social development theory recognizes and incorporates societal actors:**

- ❖ Societal actors such as ward committees, interdepartmental infrastructure coordination, municipal infrastructure investment, coordination, spatial planning committees and rely heavily on cooperation and partnerships with other policy actors such as the national, provincial and state agencies and task teams. Within the proposed model, actors are treated as equal partners for the achievement of infrastructure development goals and objectives.
- ❖ The provision infrastructure involves collaboration and joint efforts between the three spheres of government, national government entity such as the Infrastructure South Africa (ISA) from the Ministry of Public Works and Infrastructure
- ❖ ISA should lead in terms of promoting participation, involvement, and the encouragement of community ownership of infrastructure development projects. It must be noted that Infrastructure South Africa (ISA) was established as the country's single point of entry for large-scale infrastructure projects and by implication, the country's single national custodian of the project pipeline for priority and largescale infrastructure projects.

- ❖ ISA aims to streamline institutional roles, improve transparency and accountability, and expedite new ways to boost capacity for robust infrastructure investment planning and efficient delivery, utilising both public and private resources.
- **Roles of different committees and task teams**
  - ❖ **Infrastructure Investment Review Committee** which reviews infrastructure investment initiatives across all spheres of government ensure investment planning and alignment between the three spheres.
  - ❖ **Provincial Infrastructure Review and Coordinating Task Team** review and coordinates infrastructure investment planning, financial planning, grant funding allocation and prioritisation, monitoring and control at provincial level to ensure there is alignment, synchronization, and integration of all infrastructure related grants.
  - ❖ **Municipal Infrastructure Coordinating Task Team** at municipal level is proposed to coordinate, lead and integrate local activities within all departments within a municipality.
  - ❖ **Municipal Infrastructure Investment Committee** that is expected to ensure that the environment is conducive for the municipality to invest in infrastructure projects, by working closely departments dealing with spatial planning, group property, human settlement, legal, and bulk infrastructure services.
  - ❖ **Inter-departmental municipal infrastructure projects forum**  
It is proposed that the committee facilitate the involvement and participation of key infrastructure departments and that departments plan together to provide a coherent approach to the delivery of infrastructure within a metropolitan municipality.
  - ❖ **The Infrastructure Development Prioritisation Committee** The main mandate of this committee is to facilitate engagements between different role-players and stakeholders at local level, prioritization, allocation of funding and approval of all infrastructure development projects The Infrastructure Development Prioritisation Committee's mandate is to ensure that all government grants are aligned at local level and integrate implementation processes to ensure a sound infrastructure delivery and as sustainable infrastructure investment planning.
  - ❖ **Spatial planning committee's** role is to facilitate and coordinate linkages between spatial planning and infrastructure development by engaging and involving key stakeholders and actors in the infrastructure development sector. Simplify planning framework to ensure synchronization of conditional grants and sector specific grants to align spatial planning targeting and prioritization across all spheres of government.
  - ❖ **Ward committees** in terms of identifying service delivery needs at ward level such as water and sanitation, housing, waste removal, health services. The model proposes spatial planning committee to enhance the integration between sectors such as housing, transport, energy, and industry, and to improve urban and rural infrastructure development, also considering spatial targeting.

The proposed model recommends municipalities to develop **Infrastructure Investment and Implementation Plans** as intergovernmental mechanism to facilitate consultation and alignment of infrastructure programmes and projects with clear -cut targets. The plan is to be incorporated into the Integrated Development Plan to ensure financial and institutional resources are integrated and aligned to ensure a coordinated approach in the delivery of infrastructure development projects at the municipal level.