

Participatory Practice : the production of locality in the developmental south

The case of the Training for Self Reliance Project [TSRP], Kingdom of Lesotho ; [1979-1987]

Iain Low | UCT - Architecture, Planning and Geomatics / African Centre for Cities – ACC

Development Bank of South Africa [DBSA] | ‘Greening Infrastructure Programmes in South Africa’

Participatory Practice : the production of locality in the developmental south

The case of the Training for Self Reliance Project [TSRP], Kingdom of Lesotho ; [1979-1987]

Iain Low | UCT - Architecture, Planning and Geomatics / African Centre for Cities – ACC

Development Bank of South Africa [DBSA] | ‘Greening Infrastructure Programmes in South Africa’



‘Green Infrastructure’

Post Colony

Developmental State

Agency & Instrumentation

Participatory Practice : the production of locality in the developmental south

The case of the Training for Self Reliance Project [TSRP], Kingdom of Lesotho ; [1979-1987]

Iain Low | UCT - Architecture, Planning and Geomatics / African Centre for Cities – ACC

Development Bank of South Africa [DBSA] | ‘Greening Infrastructure Programmes in South Africa’

World Bank / IDA

Government of Lesotho [LDC]

Training for Self Reliance Project / PIU

PIU | Project Implementation Unit

Planning Unit [standards] Tender Board [legal] Regulatory [plan approval]

MoE | Ministry of Education

MoF | Ministry of Finance

MoW | Ministry of Works

Civil Works

Classrooms / Office-Store

Furniture Supply

[desks, etc]

Speciality [labs / library]

Books Supply

RSP | Rural Sanitation Project

Latrines / Kitchens

[revolving fund]

WFP | World Food Program

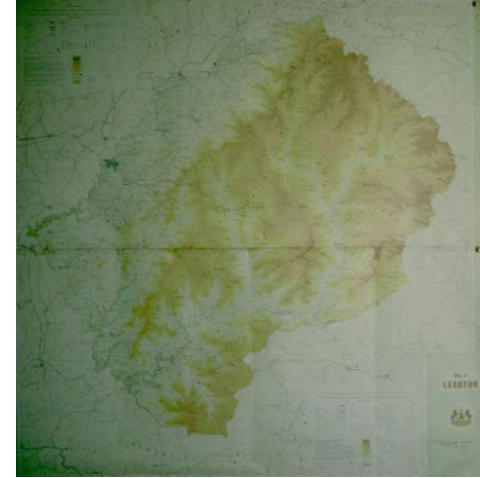
Trees / Gardens / Fences

In-Service Training

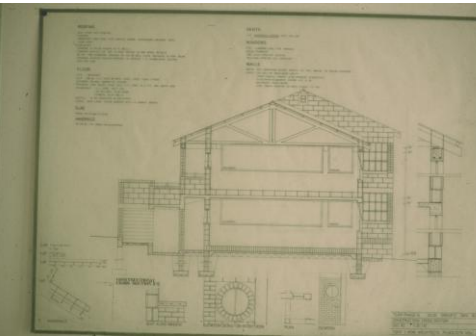
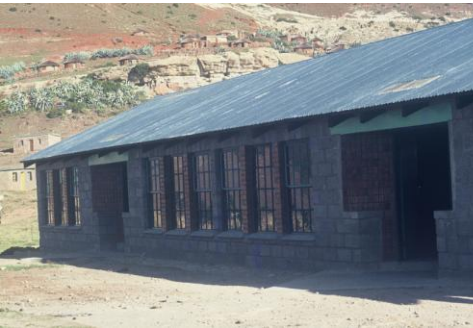
Site Work / Maintenance

[unqualified teachers]

Lesotho
The Mountain Kingdom



Training for Self Reliance [TSRP]
GoL / WB Integrated Program for the upgrade of education
Primary School Building Program Urban / Rural



Experimentation with materials and construction



Space and Transformation
 Labour Diversification / Intensive / Didactic
 Specialisation : Local Skill / Materials
 Replicable / Adaptable

Building With Limited Means - 4 FREEDOM/CONSTRAINT

The project of Critical Regionalism presents a possibility to establish a 'new' building type for the transformation of an existing condition, through the intervention of a dominating set of conditions. This has implications for form as well as for production. However, it is the former which is more easily addressed. This process for primary activity establishes an existing framework for connecting to the multiple realities which inform a building production. Design, and the Economic, therefore becomes the integration of decisions which have a crystalline effect on the design process.

This building user's view on both local / traditional skills and building techniques, as well as on both materials, in the context of the full of local conditions are integrated into the design process and their longevity of building ensured. A reciprocity with the Landscape of both 'Welfare and Community' is maintained and ensured.

**MANIFESTO
 TOWARD AN ARCHITECTURE
 BUILDING WITH LIMITED MEANS**

1. THE FOUNDATION
 2. STAR COLUMN
 3. SQUARE ROOM
 4. SQUARE BLOCK COLUMN
 5. WALL / STONE
 6. THICK WALL / THICK COLUMN
 7. WALL / STONE
 8. WALL / STONE
 9. WALL / STONE
 10. WALL / STONE
 11. WALL / STONE
 12. WALL / STONE

Sheet # 4 Portfolio Iain Low PRVAP [Arch]



**MANIFESTO
 TOWARD AN ARCHITECTURE
 BUILDING WITH LIMITED MEANS**

STATEMENT

- 1 AN ARCHITECTURE FOR SOUTHERN AFRICA MUST TAKE COGNISANCE OF THE OVERALL SOCIO-POLITICAL CONSTRAINTS OF THE REGION.
- 2 THE CURRENT DISPARITY BETWEEN THE PEOPLES OF SOUTHERN AFRICA IS REFLECTED IN THEIR HABITAT AND THE CONDITION OF THEIR RESPECTIVE SHELTER.
- 3 THE "PRACTICE OF ARCHITECTURE" IN SOUTH AFRICA IS OFTEN AN ELITIST AFFAIR WHICH THE I.S.A.A. ATTEMPTS TO CONTROL AND CAN THEREFORE CHANGE.
- 4 ANY ATTEMPT TO RESOLVE AN ARCHITECTURE FOR SOUTHERN AFRICA MUST CONSIDER THE ABOVE IN THE LIGHT OF: LIMITED RESOURCES/MASS OF PEOPLE TO BE SHELTERED, APPROPRIATENESS OF TECHNOLOGY AND ENERGY/LABOUR INTENSIVE METHODS/ & ETC.
- 5 SOLUTIONS WHICH BUILD WITH LIMITED MEANS AND ATTEMPT TO DEVELOP STANDARD BUILDING AND CONSTRUCTION TYPES WHICH ARE EASILY REPLICABLE, RESPONSIVE TO THEIR RESPECTIVE CONTEXT AND ADAPTABLE THROUGHOUT THE REGION, MUST THEREFORE BE ADDRESSED.
- 6 WHILE ARCHITECTURE RELIES ON CONCEPTUAL IDEAS, IT IS THE TRANSLATION OF IDEAS INTO BUILT FORM, GOVERNED BY THE 5 PRIMARY RESPONSES TO: 1 - CONTEXT; 2 - SPACE; 3 - FORMALITY; 4 - FUNCTION & 5 - GENERALITY, WHICH MAKE FOR GOOD ARCHITECTURE

CURRENT SOLUTIONS

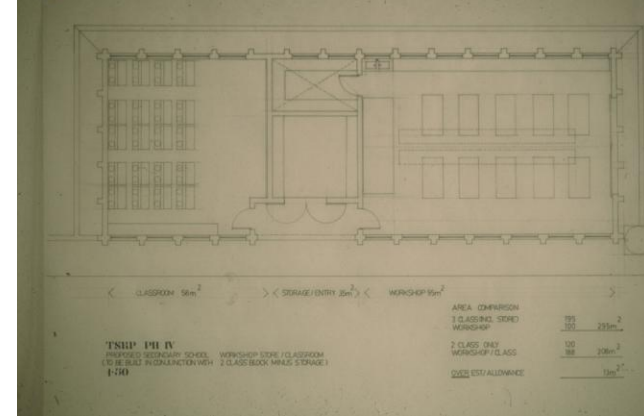
PAV. PENETRATION, STAR COLUMN, RING BEAM, BLOCK INFL., STONE INFL., BLOCK INFL., WINDOW INFL., ROOF INFL., THICK WALL, INDIVIDUALITY PARTICIPATION

LIBRARY BUILDING, OFFICE STORE, CLASSROOM BUILDING TYPE, VENTED DOUBLE PIT LATRINE, STAY HOUSE

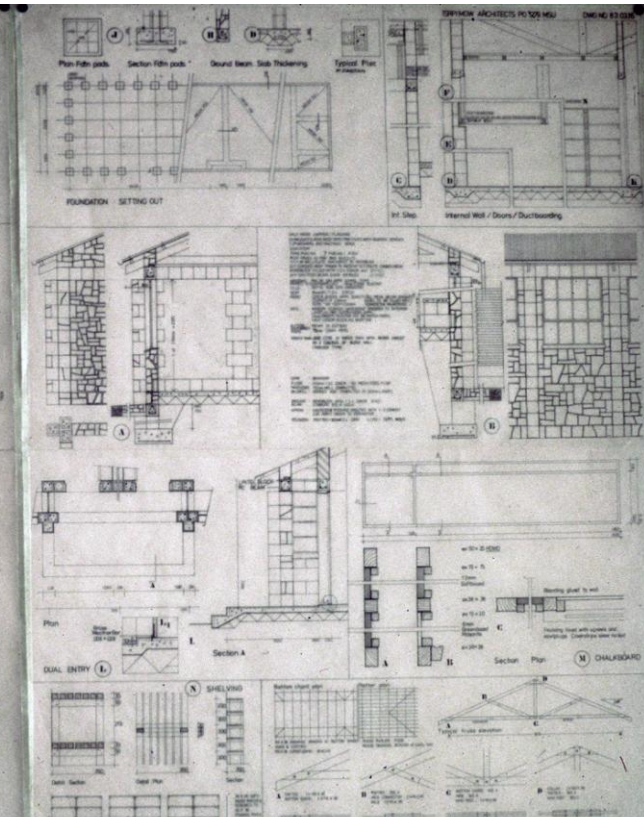
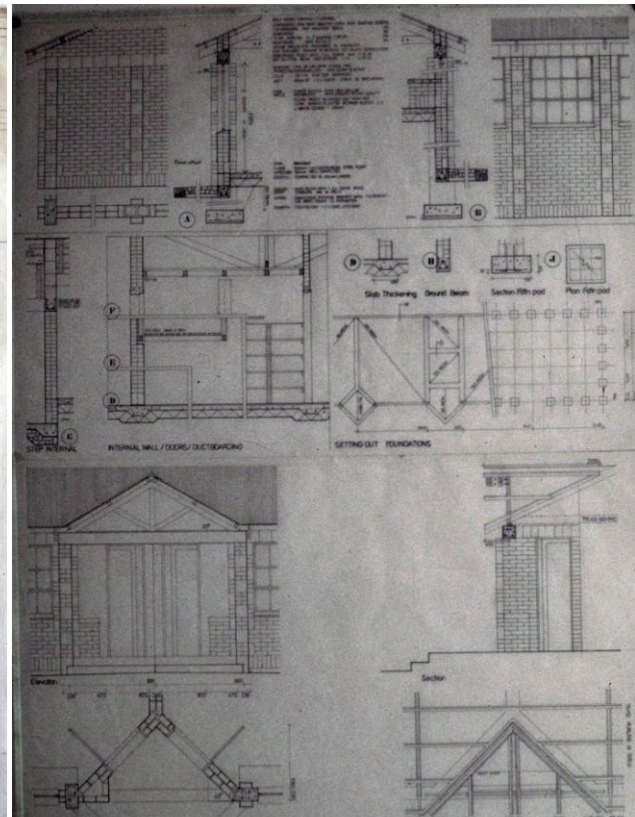
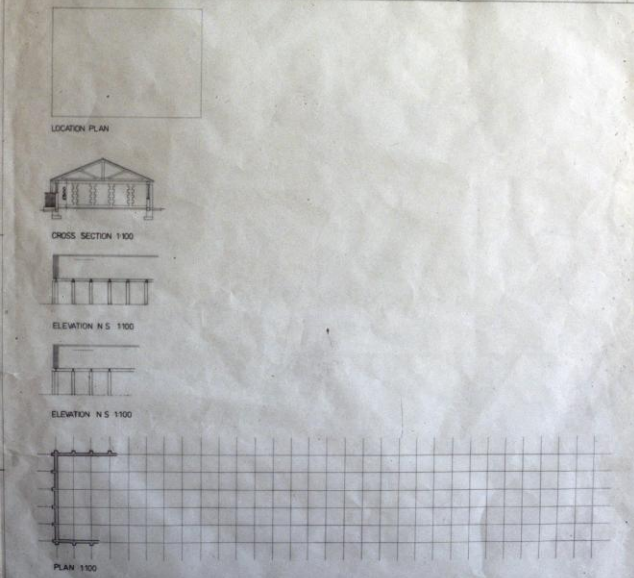
**IAIN LOW · MASERU · 1985
 - I.S.A.A. CONGRESS -**

Systems Building

In service training for tech students [LTI] / hand production



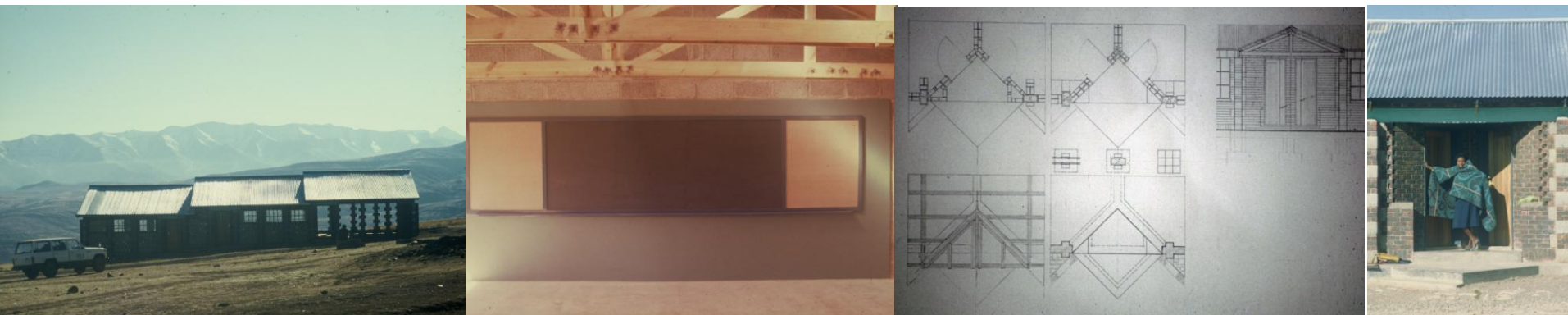
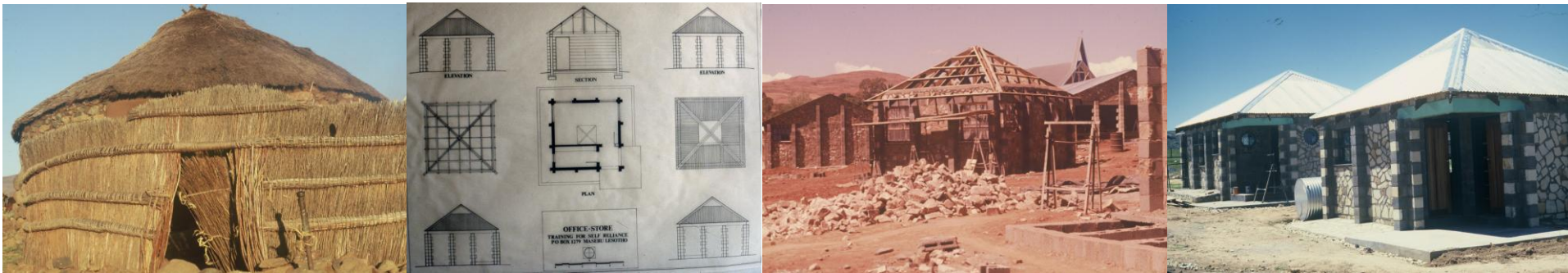
NO.	SYMBOL	DESCRIPTION	NO.	SYMBOL	DESCRIPTION
1	101	102	103	104	105
106	107	108	109	110	111
112	113	114	115	116	117
118	119	120	121	122	123
124	125	126	127	128	129
130	131	132	133	134	135
136	137	138	139	140	141
142	143	144	145	146	147
148	149	150	151	152	153
154	155	156	157	158	159
160	161	162	163	164	165
166	167	168	169	170	171
172	173	174	175	176	177
178	179	180	181	182	183
184	185	186	187	188	189
190	191	192	193	194	195
196	197	198	199	200	201
202	203	204	205	206	207
208	209	210	211	212	213
214	215	216	217	218	219
220	221	222	223	224	225
226	227	228	229	230	231
232	233	234	235	236	237
238	239	240	241	242	243
244	245	246	247	248	249
250	251	252	253	254	255
256	257	258	259	260	261
262	263	264	265	266	267
268	269	270	271	272	273
274	275	276	277	278	279
280	281	282	283	284	285
286	287	288	289	290	291
292	293	294	295	296	297
298	299	300	301	302	303
304	305	306	307	308	309
310	311	312	313	314	315
316	317	318	319	320	321
322	323	324	325	326	327
328	329	330	331	332	333
334	335	336	337	338	339
340	341	342	343	344	345
346	347	348	349	350	351
352	353	354	355	356	357
358	359	360	361	362	363
364	365	366	367	368	369
370	371	372	373	374	375
376	377	378	379	380	381
382	383	384	385	386	387
388	389	390	391	392	393
394	395	396	397	398	399
400	401	402	403	404	405
406	407	408	409	410	411
412	413	414	415	416	417
418	419	420	421	422	423
424	425	426	427	428	429
430	431	432	433	434	435
436	437	438	439	440	441
442	443	444	445	446	447
448	449	450	451	452	453
454	455	456	457	458	459
460	461	462	463	464	465
466	467	468	469	470	471
472	473	474	475	476	477
478	479	480	481	482	483
484	485	486	487	488	489
490	491	492	493	494	495
496	497	498	499	500	501
502	503	504	505	506	507
508	509	510	511	512	513
514	515	516	517	518	519
520	521	522	523	524	525
526	527	528	529	530	531
532	533	534	535	536	537
538	539	540	541	542	543
544	545	546	547	548	549
550	551	552	553	554	555
556	557	558	559	560	561
562	563	564	565	566	567
568	569	570	571	572	573
574	575	576	577	578	579
580	581	582	583	584	585
586	587	588	589	590	591
592	593	594	595	596	597
598	599	600	601	602	603
604	605	606	607	608	609
610	611	612	613	614	615
616	617	618	619	620	621
622	623	624	625	626	627
628	629	630	631	632	633
634	635	636	637	638	639
640	641	642	643	644	645
646	647	648	649	650	651
652	653	654	655	656	657
658	659	660	661	662	663
664	665	666	667	668	669
670	671	672	673	674	675
676	677	678	679	680	681
682	683	684	685	686	687
688	689	690	691	692	693
694	695	696	697	698	699
700	701	702	703	704	705
706	707	708	709	710	711
712	713	714	715	716	717
718	719	720	721	722	723
724	725	726	727	728	729
730	731	732	733	734	735
736	737	738	739	740	741
742	743	744	745	746	747
748	749	750	751	752	753
754	755	756	757	758	759
760	761	762	763	764	765
766	767	768	769	770	771
772	773	774	775	776	777
778	779	780	781	782	783
784	785	786	787	788	789
790	791	792	793	794	795
796	797	798	799	800	801
802	803	804	805	806	807
808	809	810	811	812	813
814	815	816	817	818	819
820	821	822	823	824	825
826	827	828	829	830	831
832	833	834	835	836	837
838	839	840	841	842	843
844	845	846	847	848	849
850	851	852	853	854	855
856	857	858	859	860	861
862	863	864	865	866	867
868	869	870	871	872	873
874	875	876	877	878	879
880	881	882	883	884	885
886	887	888	889	890	891
892	893	894	895	896	897
898	899	900	901	902	903
904	905	906	907	908	909
910	911	912	913	914	915
916	917	918	919	920	921
922	923	924	925	926	927
928	929	930	931	932	933
934	935	936	937	938	939
940	941	942	943	944	945
946	947	948	949	950	951
952	953	954	955	956	957
958	959	960	961	962	963
964	965	966	967	968	969
970	971	972	973	974	975
976	977	978	979	980	981
982	983	984	985	986	987
988	989	990	991	992	993
994	995	996	997	998	999
1000	1001	1002	1003	1004	1005



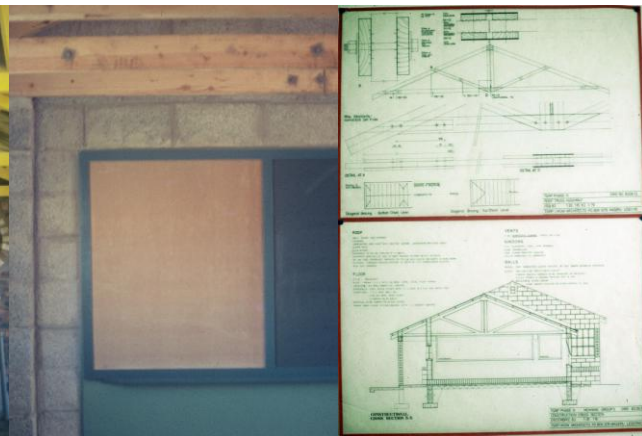
Local materials
sameness / difference
Identity of crafts



National Agenda : Economic Development
Training and Learning Platform
Skills & new / emerging Contractors

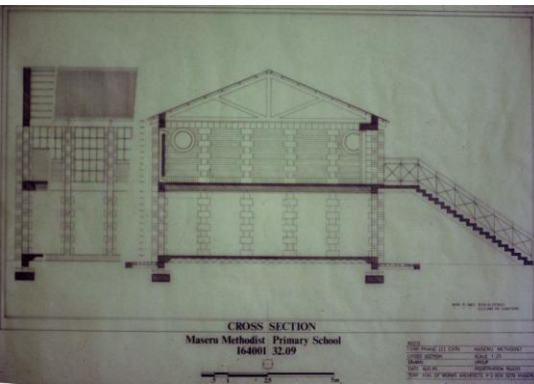
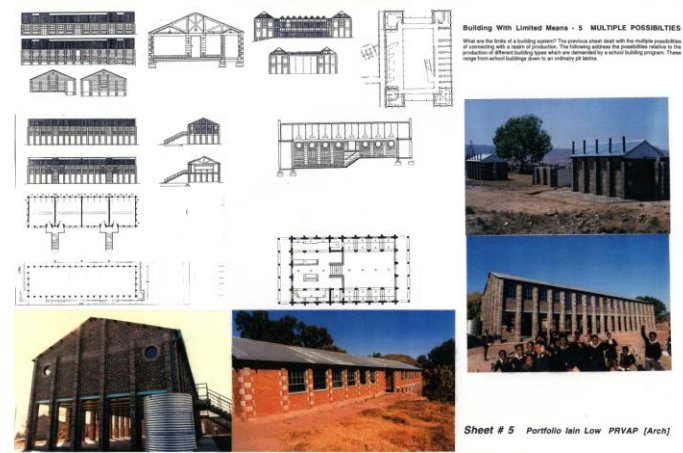


Local Imperatives
Labour intensive specification



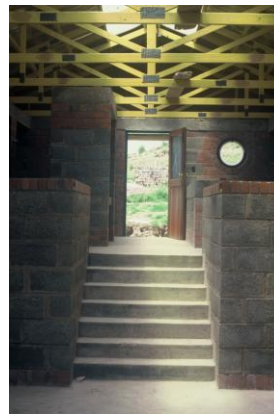
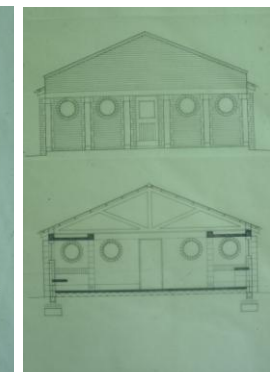
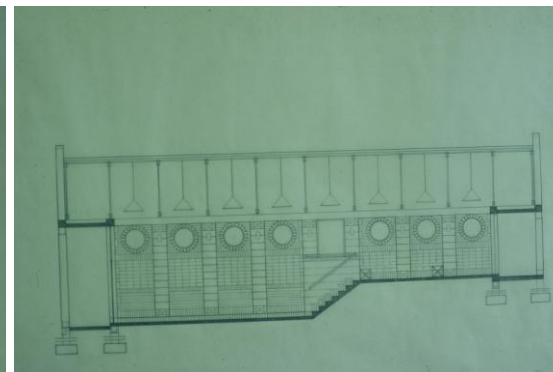
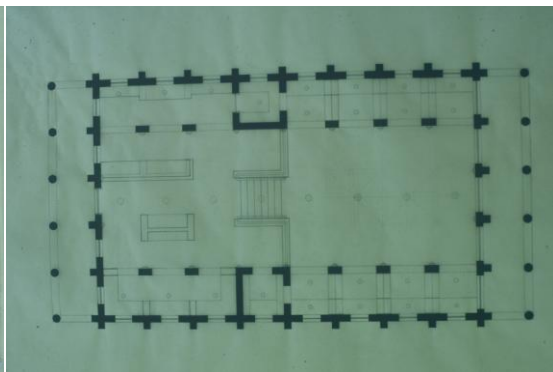
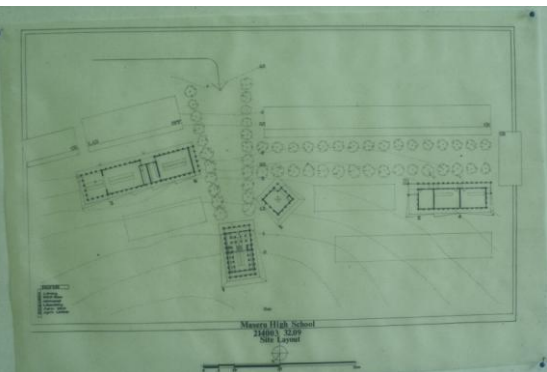
Urban Types : Temporal Dimensions

Densification of urban sites [double storey/shell]
Passive Heating - Trombe Walls

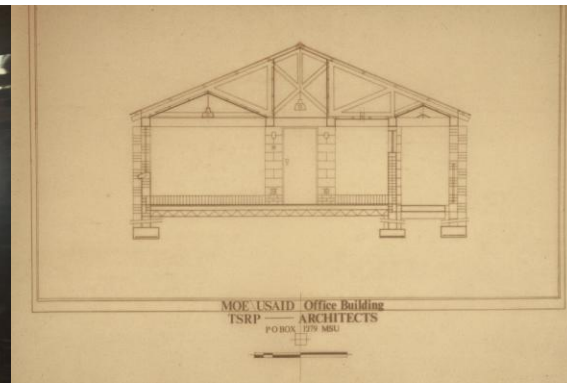
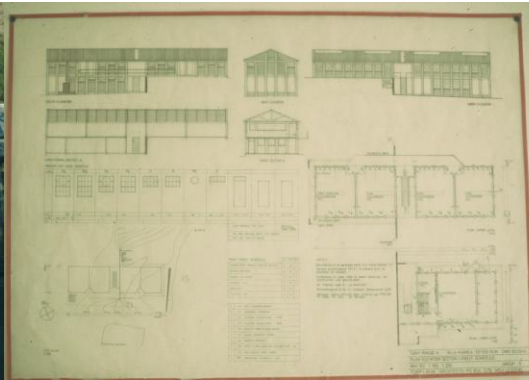
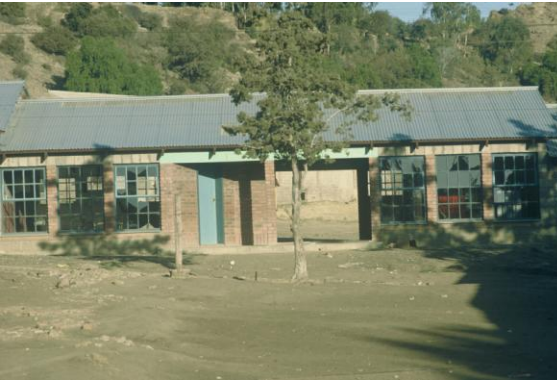


Speciality Types : Secondary Schools

Library+ – Multifunctional / Interpretative Space

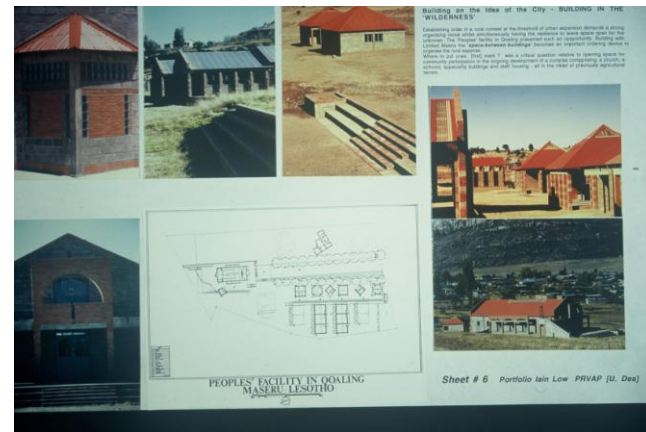


Extraneous conditions : Other Applications
Adapting old buildings / re-use of sites
Ministry / NGO administration

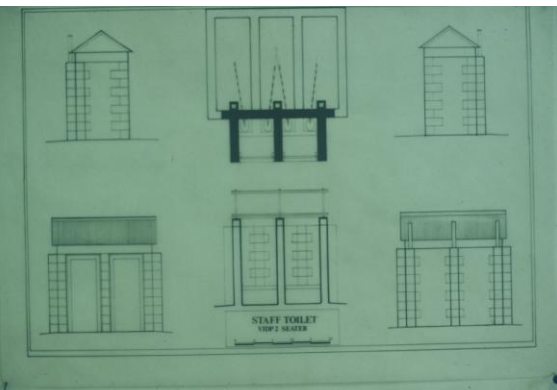
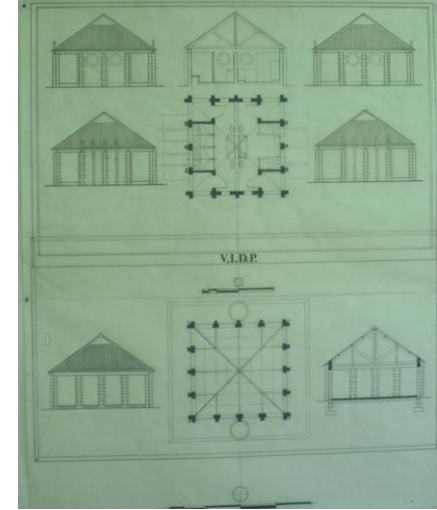


Site Work[s] : Activation of outdoor space

Small scale work for local skill development and other uses



Special Building Types : kitchen and ablutions
Use of Appropriate Technology
VIP / VIDP toilets and Food Aid kitchens

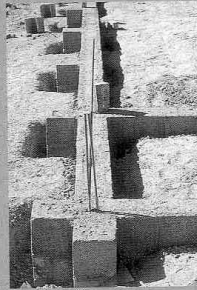


Building with limited means : common sense / thinking and acting responsibly

The building system



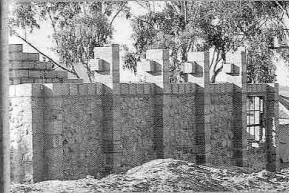
Setting out of the pad foundation.



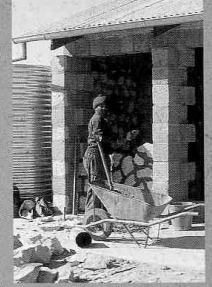
Ring beam at ground level joins adjacent stub columns, saving on undersurface masonry and providing a datum to work from.



Window and door infill fits exactly between columns.



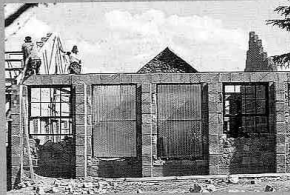
Emerging gable wall with ring beam providing additional long-term stability.



Local community effort to infill an open-framed classroom.



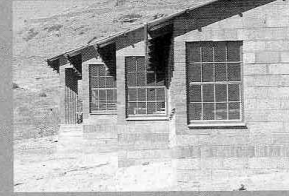
Small building prototype provides an excellent learning model for the acquisition of a range of building skills.



Experimental fibreglass window.



Library resource rooms.



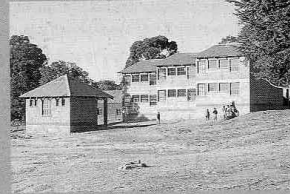
Grabbing morning sun for the cold winter.



Classroom showing roof structure and infill walls.



Office store.



Double storey building on a tight site allows space to be retained for play areas and introduces more complex construction techniques.



Open-framed classroom before infill.



Local 'toli' brick.



Concrete block produced on site.



Participatory Practice : the production of locality in the developmental south

The case of the Training for Self Reliance Project [TSRP], Kingdom of Lesotho ; [1979-1987]

Iain Low | UCT - Architecture, Planning and Geomatics / African Centre for Cities – ACC

Development Bank of South Africa [DBSA] | 'Greening Infrastructure Programmes in South Africa'



Participatory Practice : the production of locality in the developmental south

The case of the Training for Self Reliance Project [TSRP], Kingdom of Lesotho ; [1979-1987]

Iain Low | UCT - Architecture, Planning and Geomatics / African Centre for Cities – ACC

Development Bank of South Africa [DBSA] | ‘Greening Infrastructure Programmes in South Africa’

Training for Self Reliance Architects

‘Green Infrastructure’ | Post Colony | Developmental State | Agency & Instrumentation

production of locality [situated modernism] how 2 become modern senza losing sources

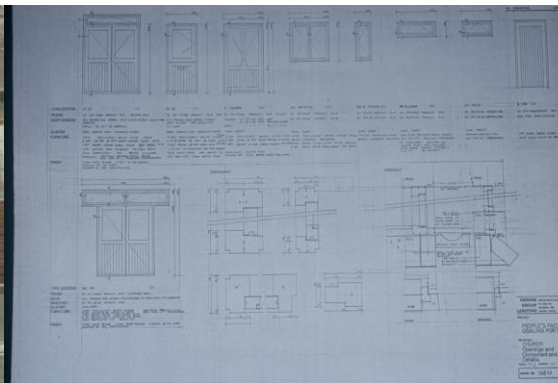
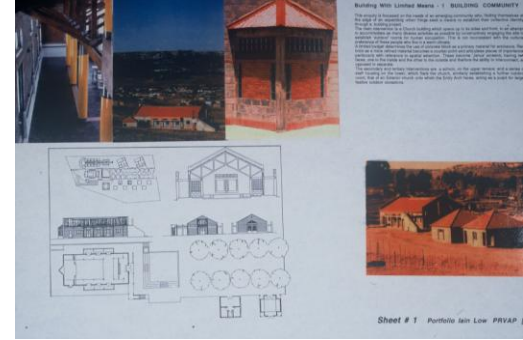
Integrating development

agency / instrumentation co production research laboratory iteration critical reflection

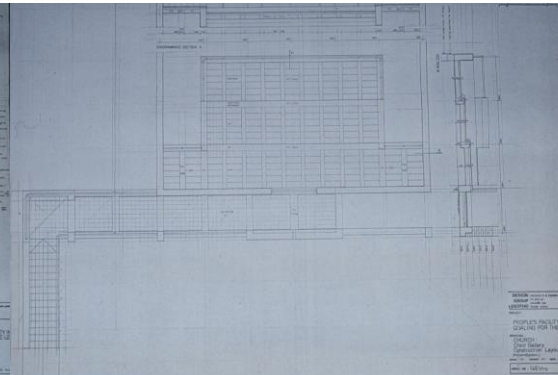
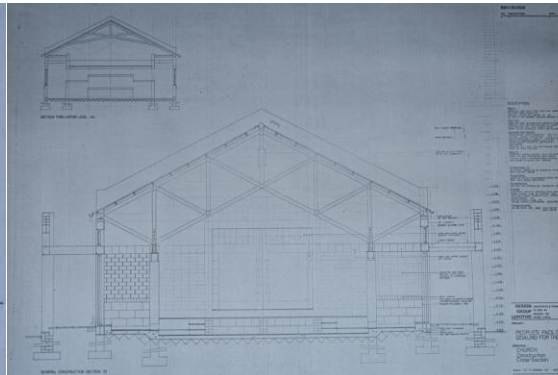
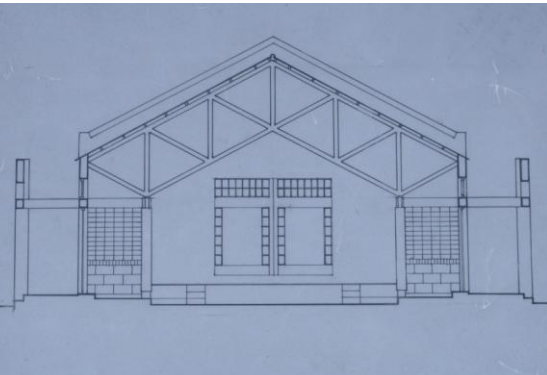
cultural construct - space / society : social / economic / political



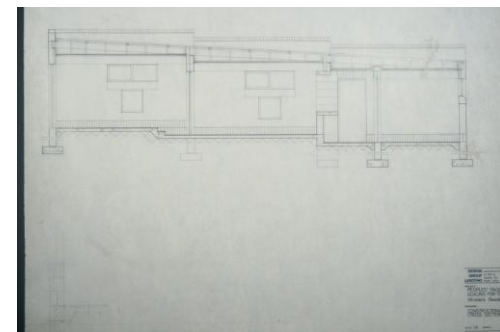
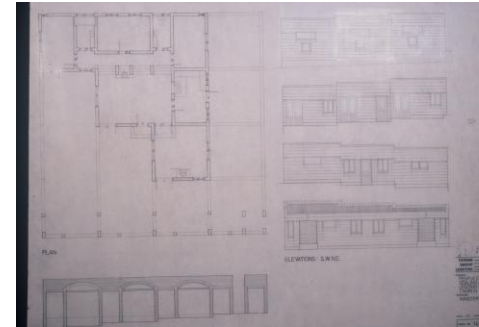
Peoples' Facility in Qoaling,
Maseru, Lesotho : 1979-1981 [+]



Structure : Enclosure [articulation of trades]



Replication
Testing on different types



'Green Infrastructure'

enviro / economic / social vs LEED star rating [ex australia]

Post Colony

social justice / equity

decent work socio-economic ie. tention with enviro

Developmental State

growth and sustainability

Agency & Instrumentation

values + ethics that inform policy translation

responsible / do the right thing

arch - production of locality / situate modernism

new modes of architectural production : practice / types /
materials / technique

integrative processes / participatory practice

implications for design education

Case

TSRP

Local conditions

Rural space/time	mountain kingdom distance / climate winter summer
modernity / tradition	competing rationalities
Vernacular	ownership of means of spatial reproduction [IKS]
Schools	mission – 3 x ea village walk hungry / poor condition / mud – maintenance / heat light etc unqualified teacher / hi ration teacher : pupil / de motivated / specialisation subjects etc