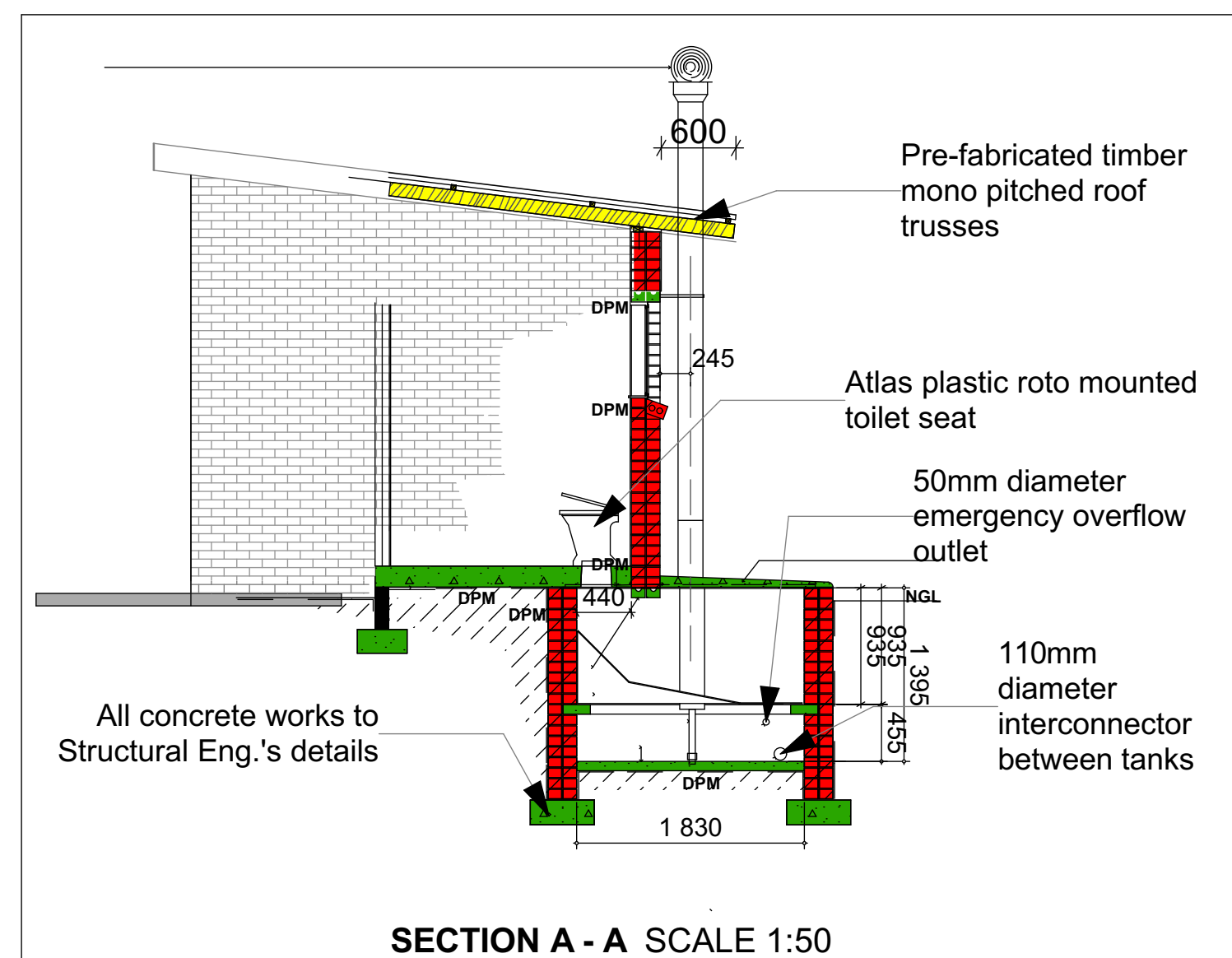


WINDOW SCHEDULE

CODE	W1	W2
EXTERNAL CILL	Brick on edge - to match face brick	Brick on edge - to match face brick
INTERNAL CILL	150 x 15mm thick fibre cement pressed cement window sill fixed to wall in-bedded in 13 cement mortar.	150 x 15mm thick fibre cement pressed cement window sill fixed to wall in-bedded in 13 cement mortar.
FRAME TYPE:	900 x 600mm high, standard aluminium window, frame to comply with AAAMSA specifications.	600 x 600mm high, standard aluminium window, frame to comply with AAAMSA specifications.
FRAME FINISH	Powder coated aluminium finish	Powder coated aluminium finish
GLAZING	6mm Safety glass	6mm Safety glass



ALL DIMENSIONS TO BE CHECKED ON SITE PRIOR TO ANY WORK OR SHOP DRAWINGS. ALL DISCREPANCIES TO BE DISCUSSED WITH PROJECT MANAGER PRIOR TO IMPLEMENTATION THEREOF.

REVISION	DATE	NO	REVISIONS	INIT.

■ Implementing Agent



SIGNATURE DATE.....

■ Client



■ Consultant



Project Title:
MGUDU PRIMARY SCHOOL

EMIS No. 200400585

date: 06 APRIL 2021 scales: AS SHOWN

drawn: PJM

Drawing Description:

PROPOSED NEW ABLUTION FACILITIES AND DEMOLITION OF EXISTING ABLUTIONS

Job No. EC-2021/2 Drawing No. MSPS-101 Rev. No. C

ISSUED FOR APPROVAL

ISSUED FOR INFORMATION

ISSUED FOR SUBMISSION

ISSUED FOR TENDER

ISSUED FOR CONSTRUCTION