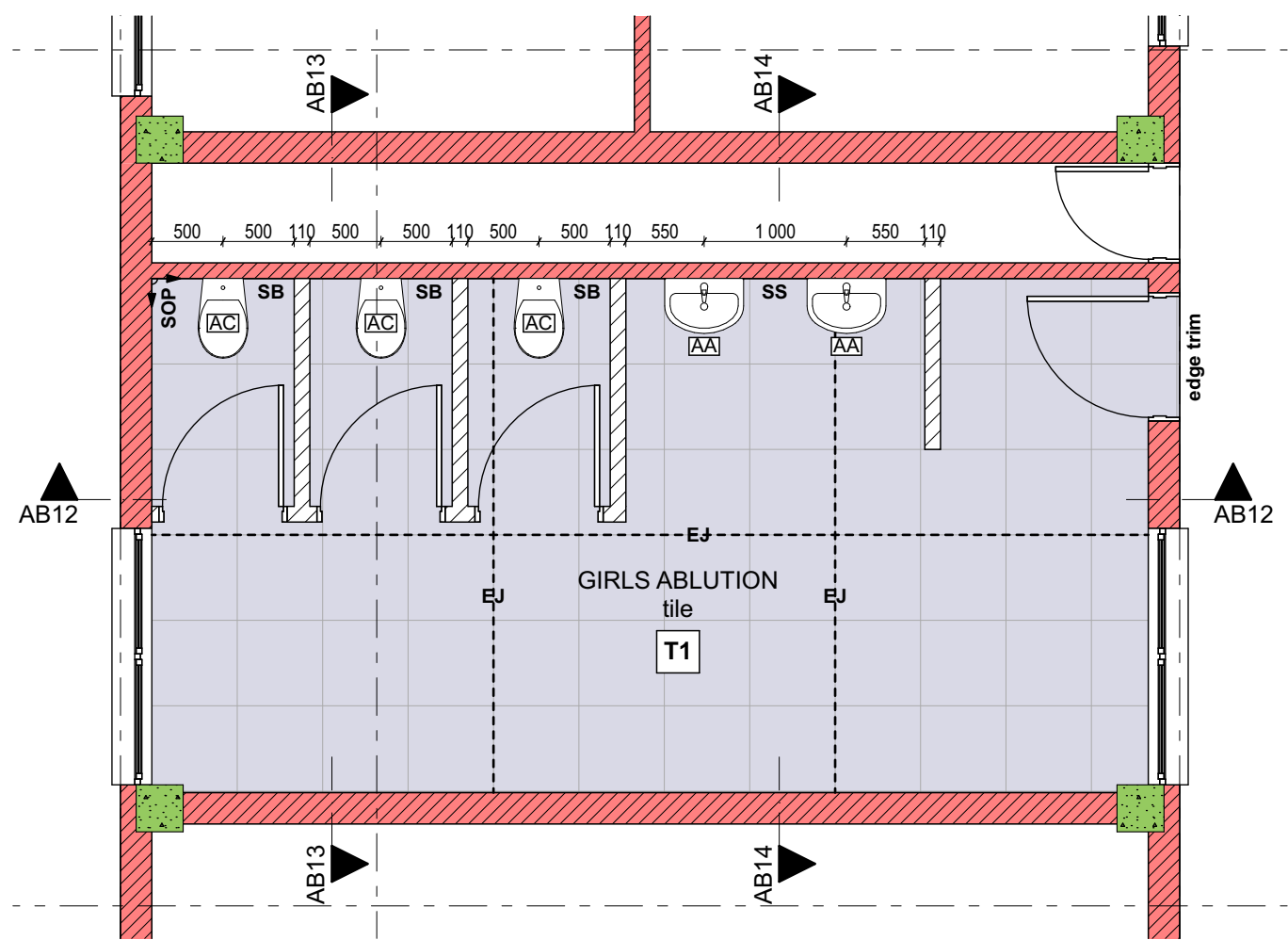
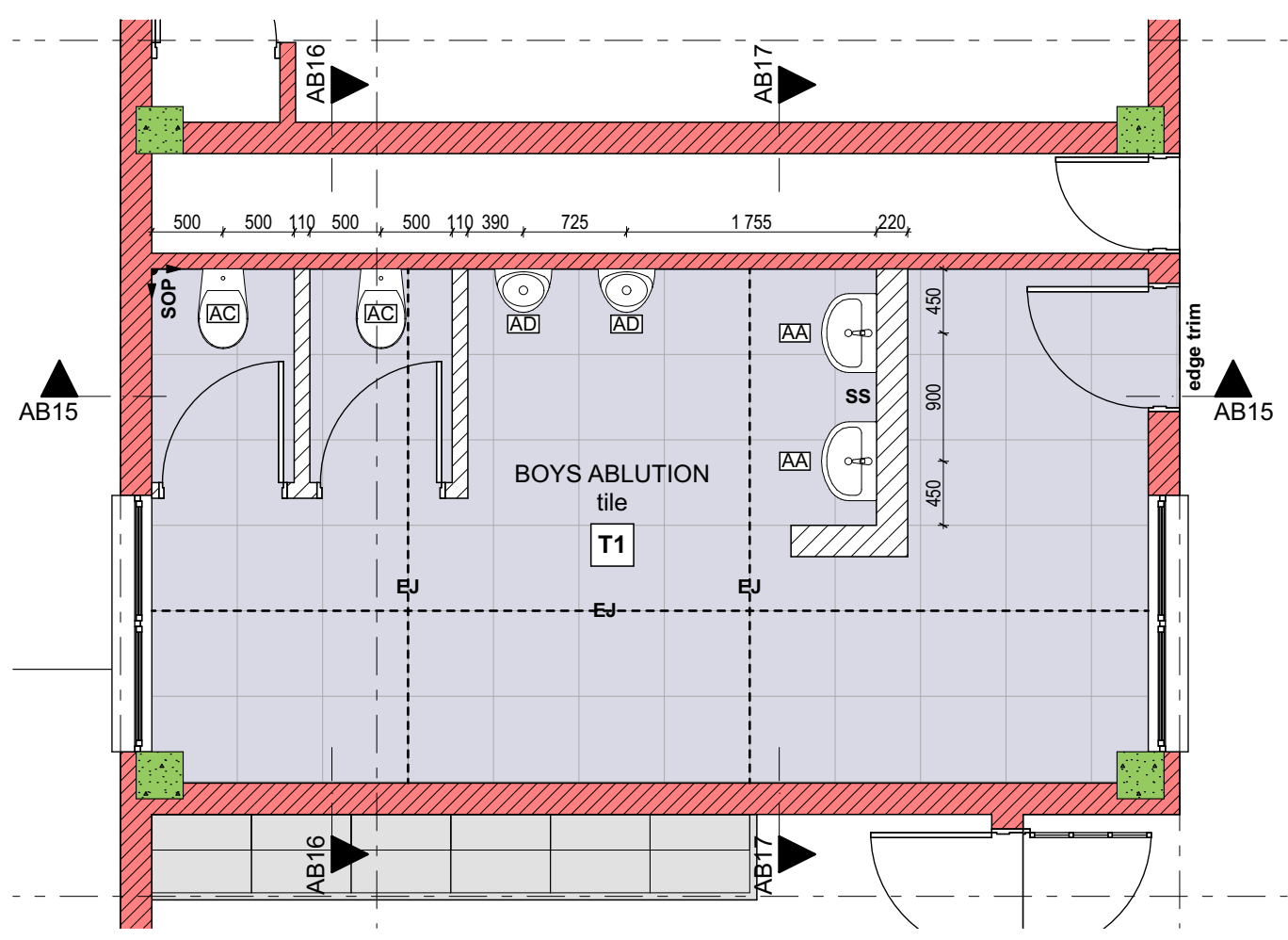


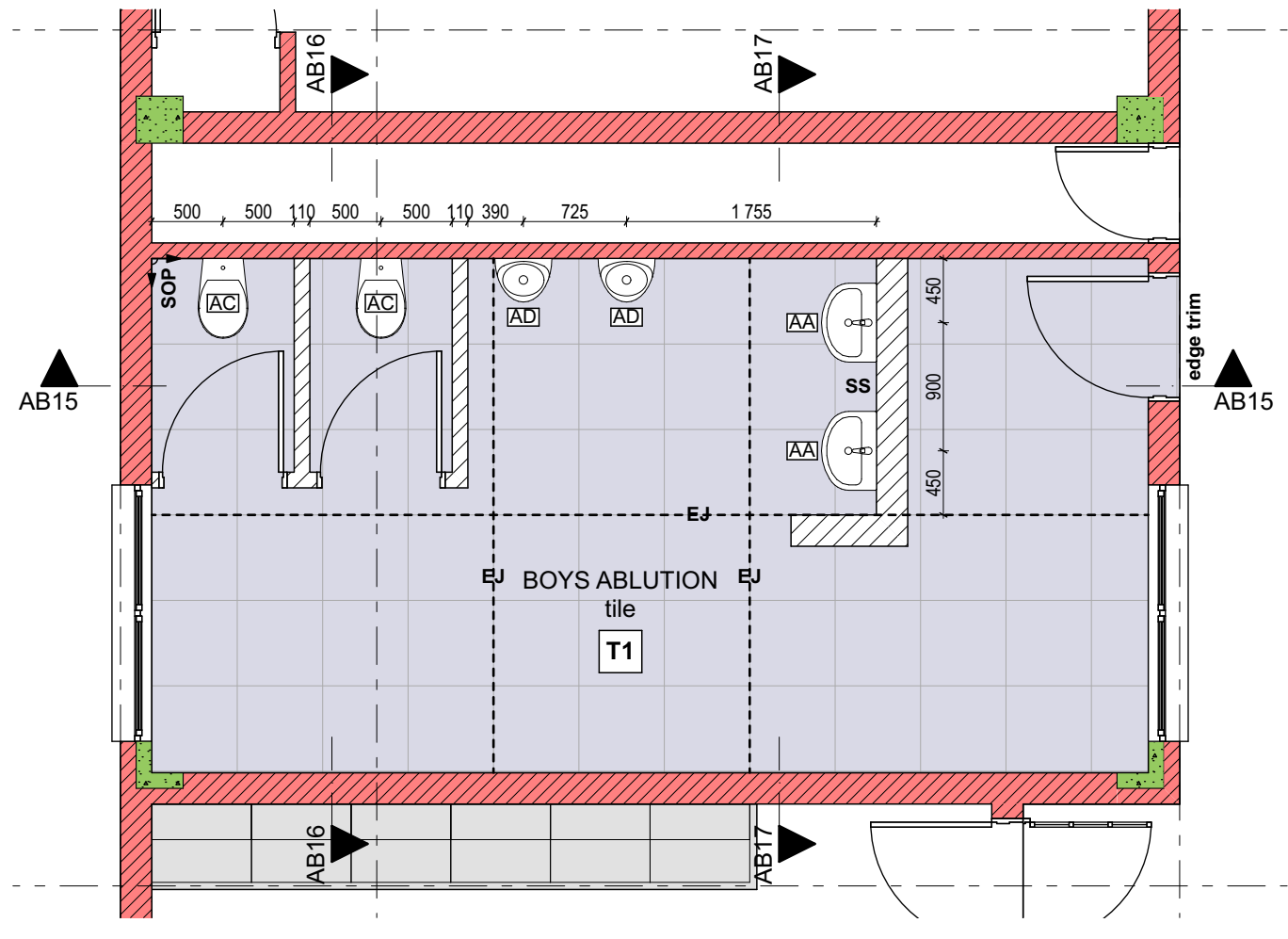
Block D (North) Ground Storey 1:50



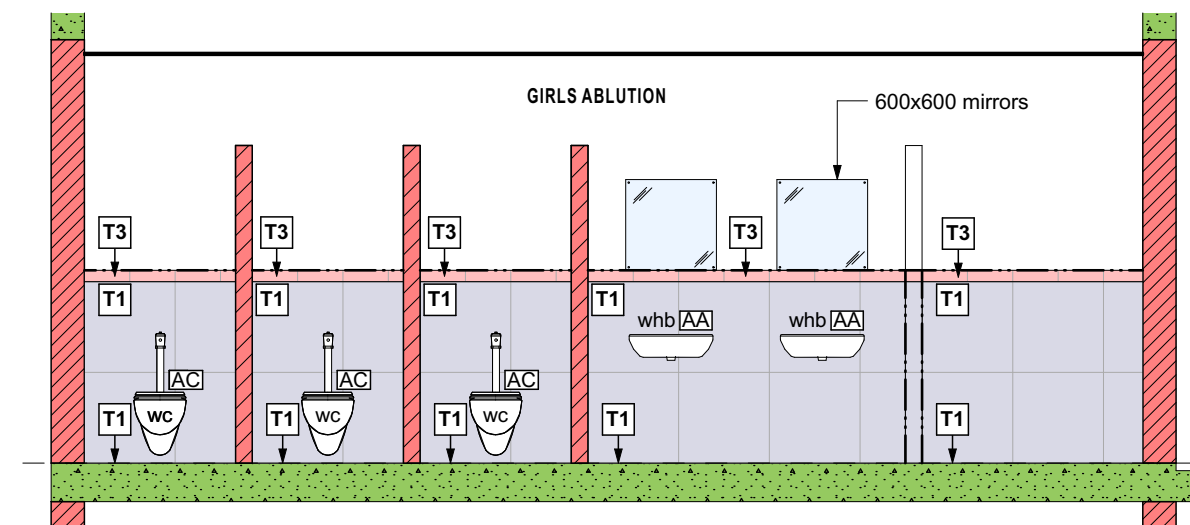
Block D (North) First Storey 1:50



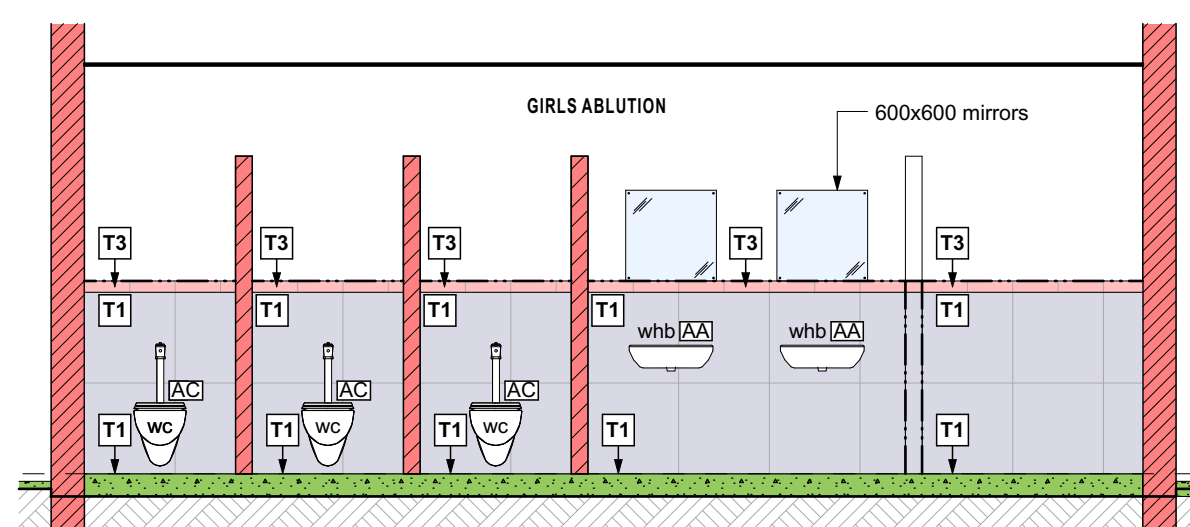
Block D (South) Ground Storey 1:50



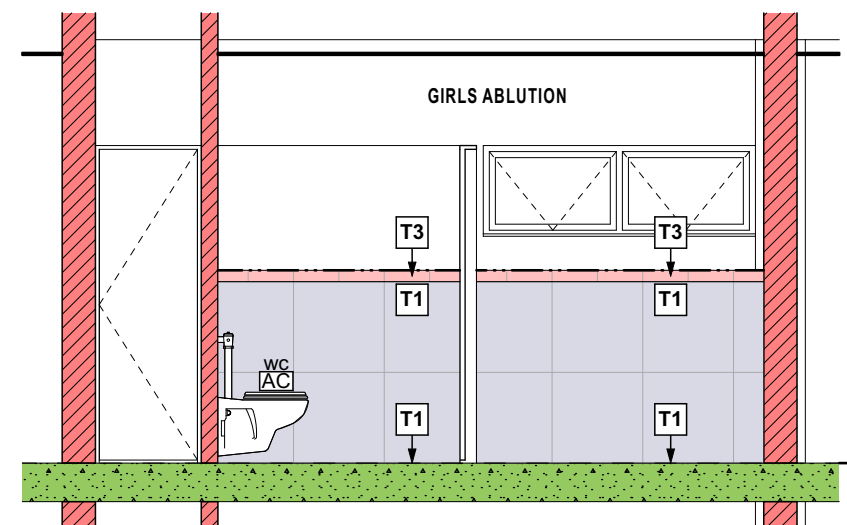
Block D (South) First Storey 1:50



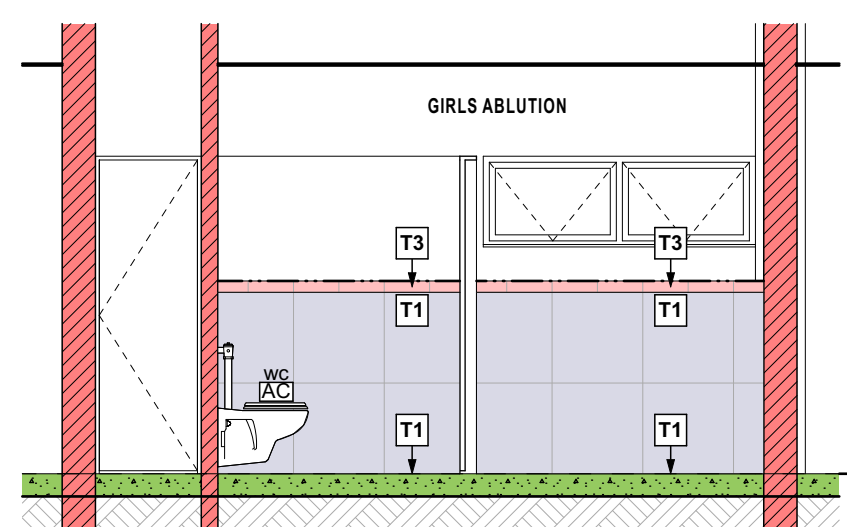
AB12 Ablution Section 12 - First Floor 1:50



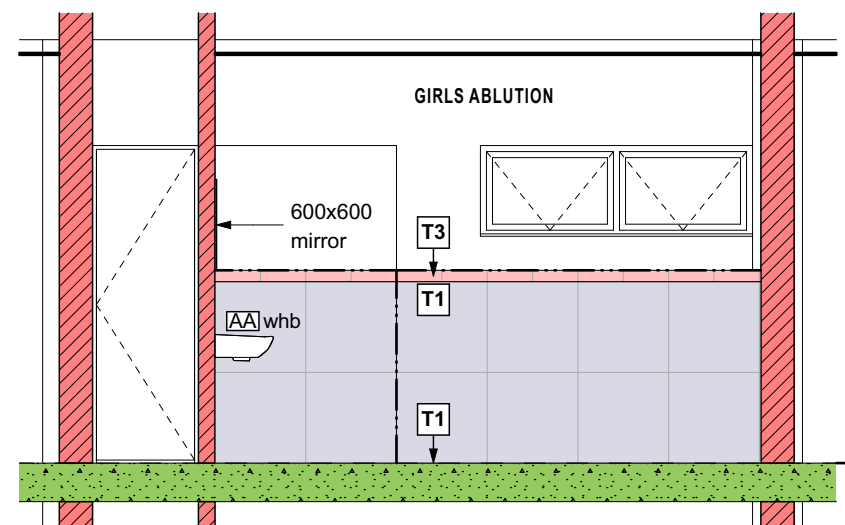
AB12 Ablution Section 12 - Ground Floor 1:50



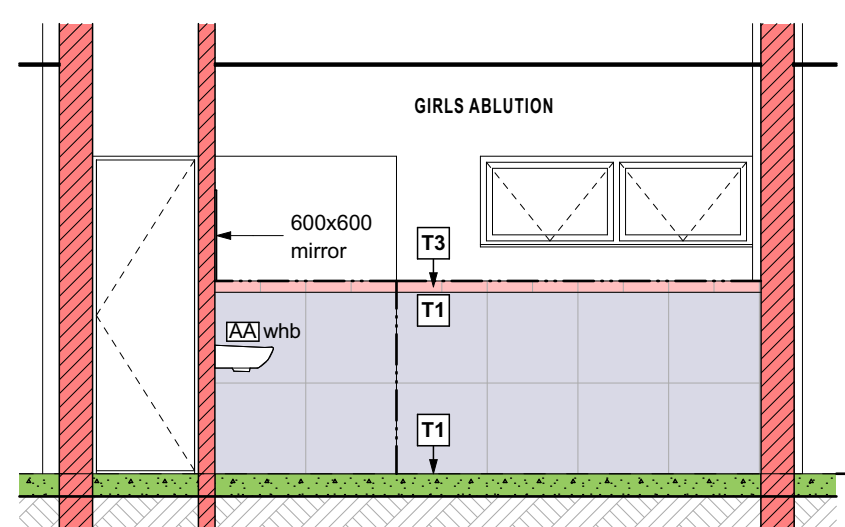
AB13 Ablution Section 13 - First Floor 1:50



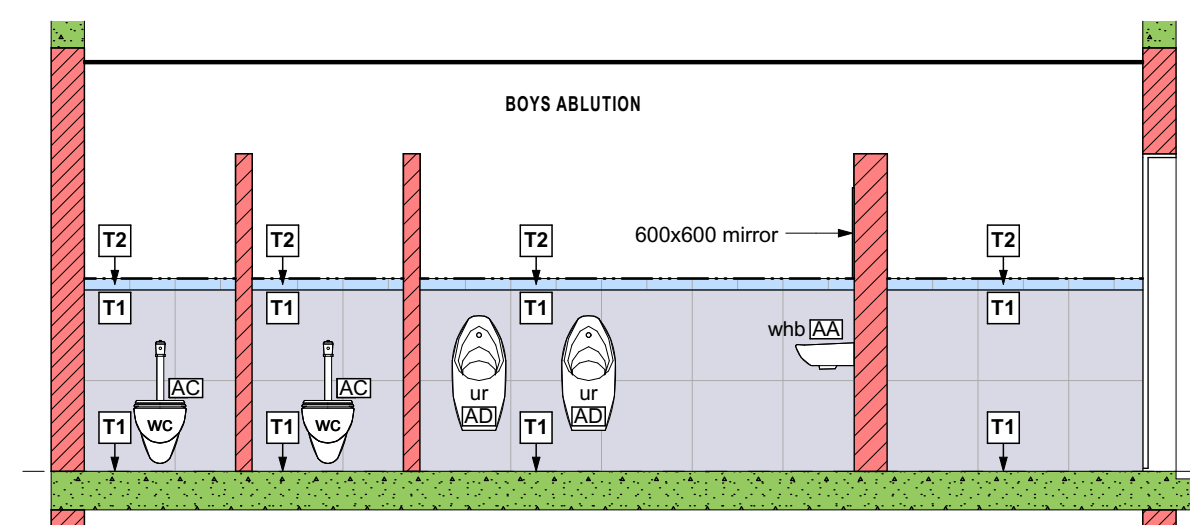
AB13 Ablution Section 13 - Ground Floor 1:50



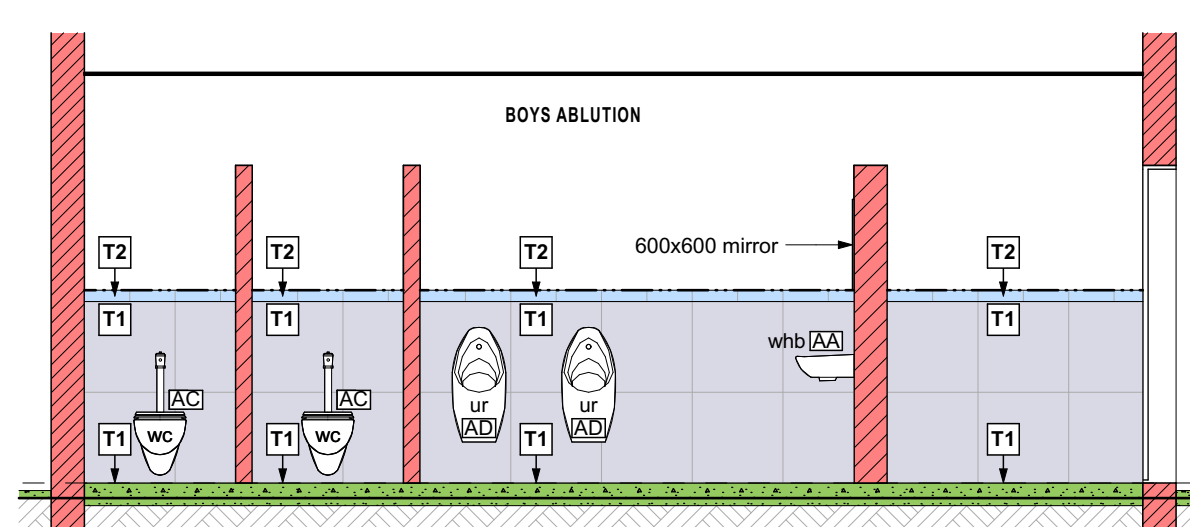
AB14 Ablution Section 14 - First Floor 1:50



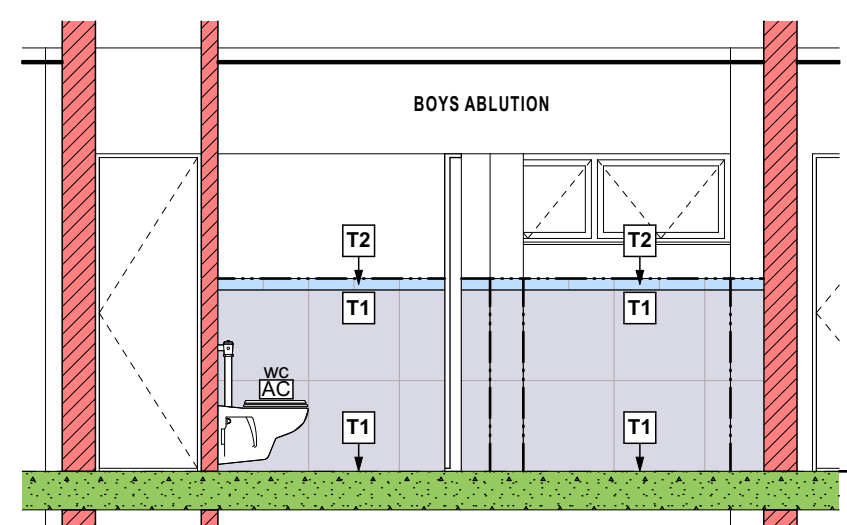
AB14 Ablution Section 14 - Ground Floor 1:50



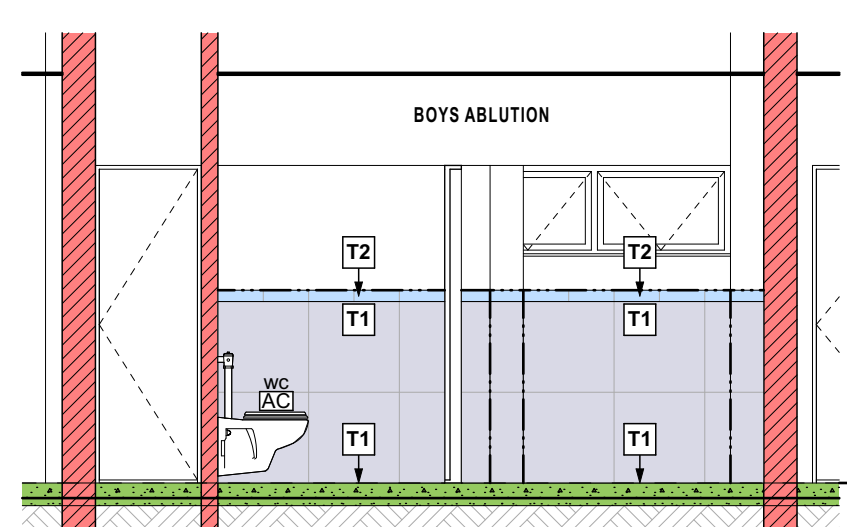
AB15 Ablution Section 15 - First Floor 1:50



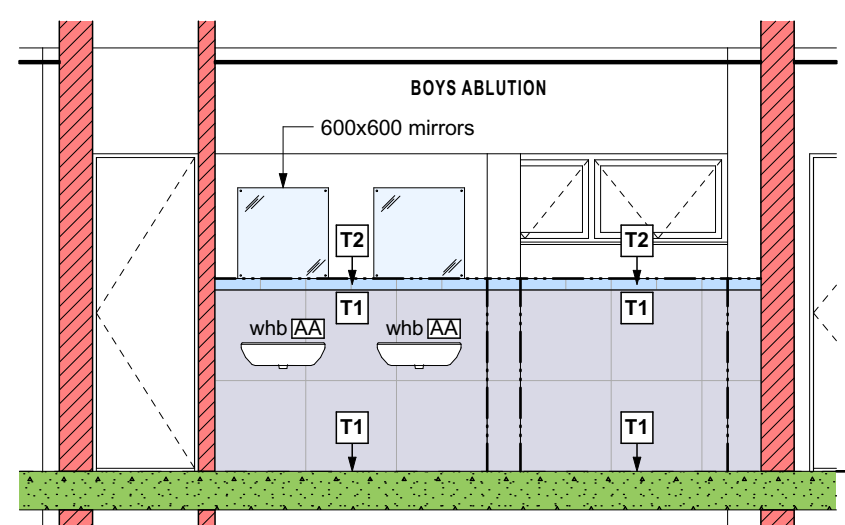
AB15 Ablution Section 15 - Ground Floor 1:50



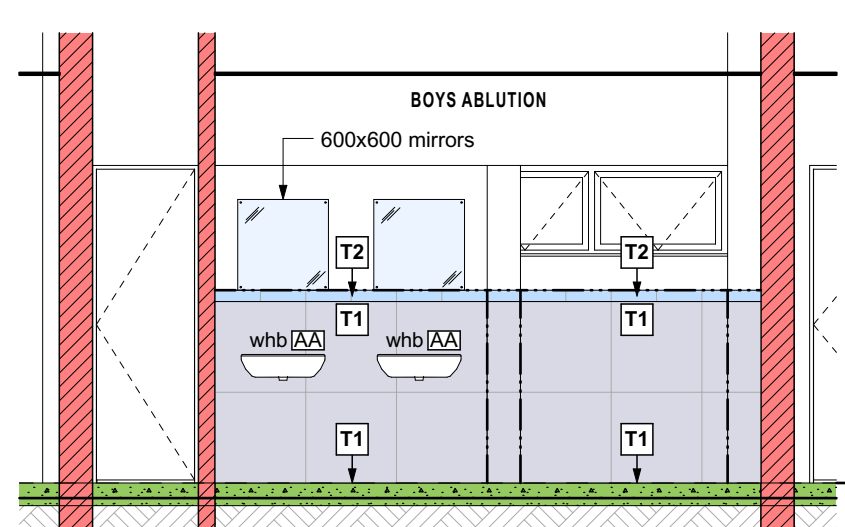
AB16 Ablution Section 16 - First Floor 1:50



AB16 Ablution Section 16 - Ground Floor 1:50



AB17 Ablution Section 17 - First Floor 1:50



AB17 Ablution Section 17 - Ground Floor 1:50

TILE SPECIFICATIONS:

- T1** 600x600 Full Bodied Porcelain Tile by Tileoria (code: RN-BETGR) **Locations: Ablution Floors and Walls Colour: Speckled Grey**
- T2** 74x148 Glass Listello "Dado" tile over Wall Tile Type T1 by Tileoria (code: RN-95) **Locations: Male Ablutions Colour: Dark Blue**
- T3** 74x148 Glass Listello "Dado" tile over Wall Tile Type T1 by Tileoria (code: RN-1113) **Locations: Female Ablutions Colour: Light Blue**
- T4** 74x148 Glass Listello "Dado" tile over Wall Tile Type T1 by Tileoria (code: RN-96) **Locations: Teachers, Disabled Ablutions & Staff Kitchens Colour: White**
- T6** Full Body Porcelain Mosaic Shower Floor Tiles by Tileoria (code: RN-4501) **Locations: Shower Cubicle Floors**
- SOP** Tile Setting Out Point
- EJ** Expansion Joint
- Aluminium Straight Edge Trim

NOTES:
All grout sizes to be 2mm
Allow Expansion Joints to all perimeter walls/floors and maximum 3m apart
Skirting & Wall tiles to follow tile pattern on floors

SANWARE SPECS - ABLUTIONS & SHOWERS

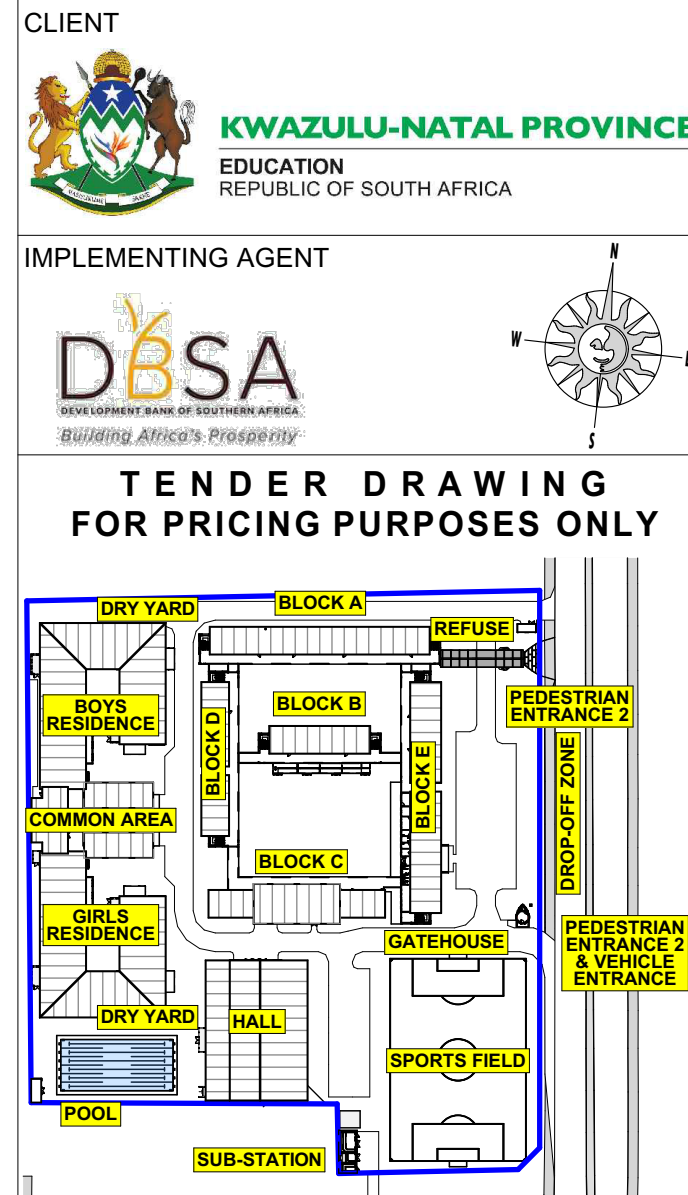
SET	QTY	DESCRIPTION
AA WHB TYPE 1	128	Basin: 553 x 386mm GROHE BAU Ceramic Wall Hung Basin with Overflow (Colour: White) Product Code: GRO-39440000 Mixer: Cobra "Taym" Metered Pillar Tap (Colour: Chrome) Product Code: COB-KM2-100FS
AB WHB TYPE 2	8	Basin: 455 x 290mm Vaal "Bantam" Wall-Hung Basin (Colour: White) Product Code: VAA-703003 Mixer: Cobra "Taym" Metered Pillar Tap (Colour: Chrome) Product Code: COB-KM2-100FS
AC WC TYPE 1	100	Pan: Vaal "Orchid" Back Entry Wall Hung Pan (Colour: White) Product Code: COBRCNN-2C00413 Flushing Mechanism: Cobra "Junior Flushmaster" (Colour: Chrome) Product Code: COB-FJ2-100
AD URINAL	25	Pan: Cobra "Snug" Wall Hung Urinal (Colour: White) Product Code: COB-CSNURWH1-6D01 Flushing Mechanism: Cobra "Junior Flushmaster" (Colour: Chrome) Product Code: COB-FJ6-000 & COB-FJ75-5
AE SHOWER	67	Shower Rose: Cobra "Vandal Proof" Shower Head (Colour: Chrome) Product Code: COB-AP2-6 Taps: Cobra Metering Stop Tap (Colour: Chrome) Product Code: COB-KM2-301

SANWARE SPECS - DISABLED ABLUTIONS

SET	QTY	DESCRIPTION
DA WHB TYPE 3	11	Basin: Vaal "Hibiscus" (Colour: White) Product Code: VAA-70283WH Mixer: Cobra "Medical Elbow Action" (Colour: Chrome) Product Code: COB-505-21B
DB WC TYPE 2	11	Pan: Vaal "Protea Paraplegic Suite" (Colour: White) Product Code: VAA-750246WH Flushing Mechanism: Cobra Standard Flushmaster (Colour: Chrome) Product Code: (COB-FJ2-100) with Cobra Extended Handle Flush Valve: (COB-C-FVB-80)
DC SHOWER	7	Shower Rose: Cobra Hand Shower Set (Colour: Chrome) Shower Arm: Cobra showerarm connector Product Code: COB-007MULTI-CP Code: COB-AP8-311 Product Code: COB-KM2-301

DISABLED BATHROOM ACCESSORIES:
Shower Seat: 7 no. off Heavy Duty Foldable Shower Seat ex Mobility Solutions
Code: M5ShowerSeatFold
Contact: 031 564 2303
email: info@mobilitysolutions.co.za

Shower Grab/Towel Rail: 7 no. off FRANKIE 600mm Straight Grab Bar
Code: CNTX600



Key Plan - NOT TO SCALE

NOTE: WALL TILES TO FOLLOW FLOOR TILE PATTERN

SEE DRAWINGS GDT916 & GDT917 FOR TYPICAL DISABLED ABLUTION LAYOUTS, SPECS & DETAILS

REV	REVISION	DATE

PROJECT MANAGER

mpa
mat

MPAMOT (Pty) Ltd
2nd Floor, South Wing, 147 Bram Fischer Drive
PO Box 3923, Randburg, 2125, South Africa
t +27 11 781 9710 f +27 11 781 9711
www.mpamot.co.za
Reg No: 1997/009813/07

ARCHITECT

GIARC
designs

6 Aurora Drive | Ridgerton Towers | Umhlanga Ridge | 4051 | South Africa
Tel: +27 (0)64 782 4179
www.giarcdesigns.co.za
craig@giarcdesigns.co.za

PROJECT
PROPOSED NEW MARITIME SCHOOL OF EXCELLENCE
41 SOMSTUE ROAD - DURBAN

REMAINDER OF LEASE ERF 12512

CLIENT
KZN DEPARTMENT OF EDUCATION

S. MKILE
signature

DRAWING TITLE
Tiling & Sanware Layout (3 of 6)

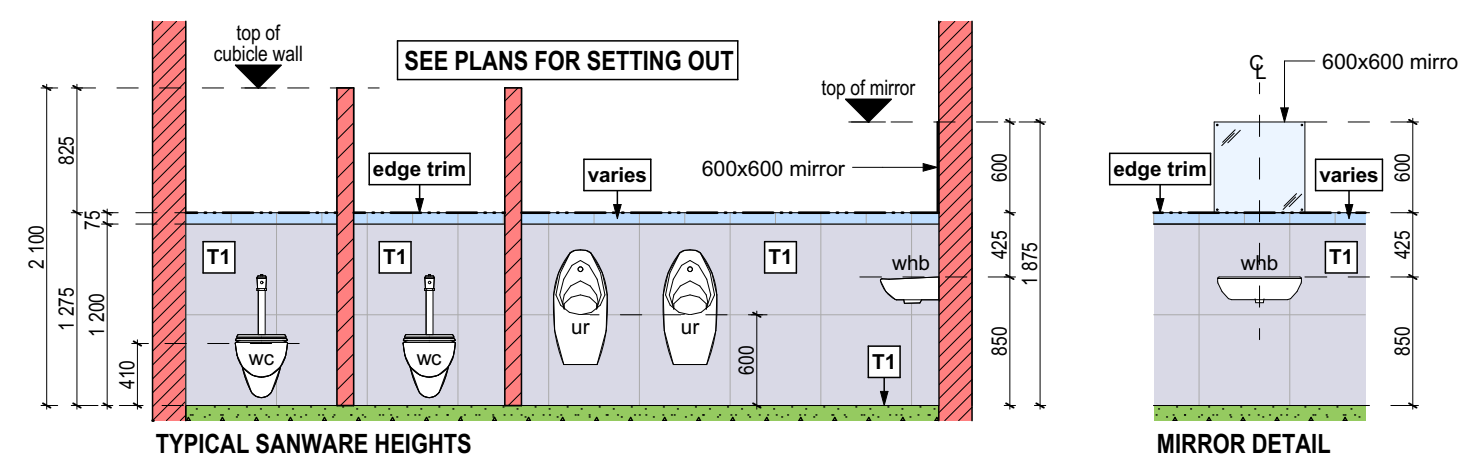
DATE 09 Nov 2021 **DRAWN** PRE **CHECKED** CM/SG

DRAWING SCALE

AS SHOWN - A1 SIZE SHEET

DRAWING NUMBER

2020_073_3_GDT912 - REV 7



Typical Sanware Heights & Details

1:50