

## Work package 2: De-comissioning, demolition and removal

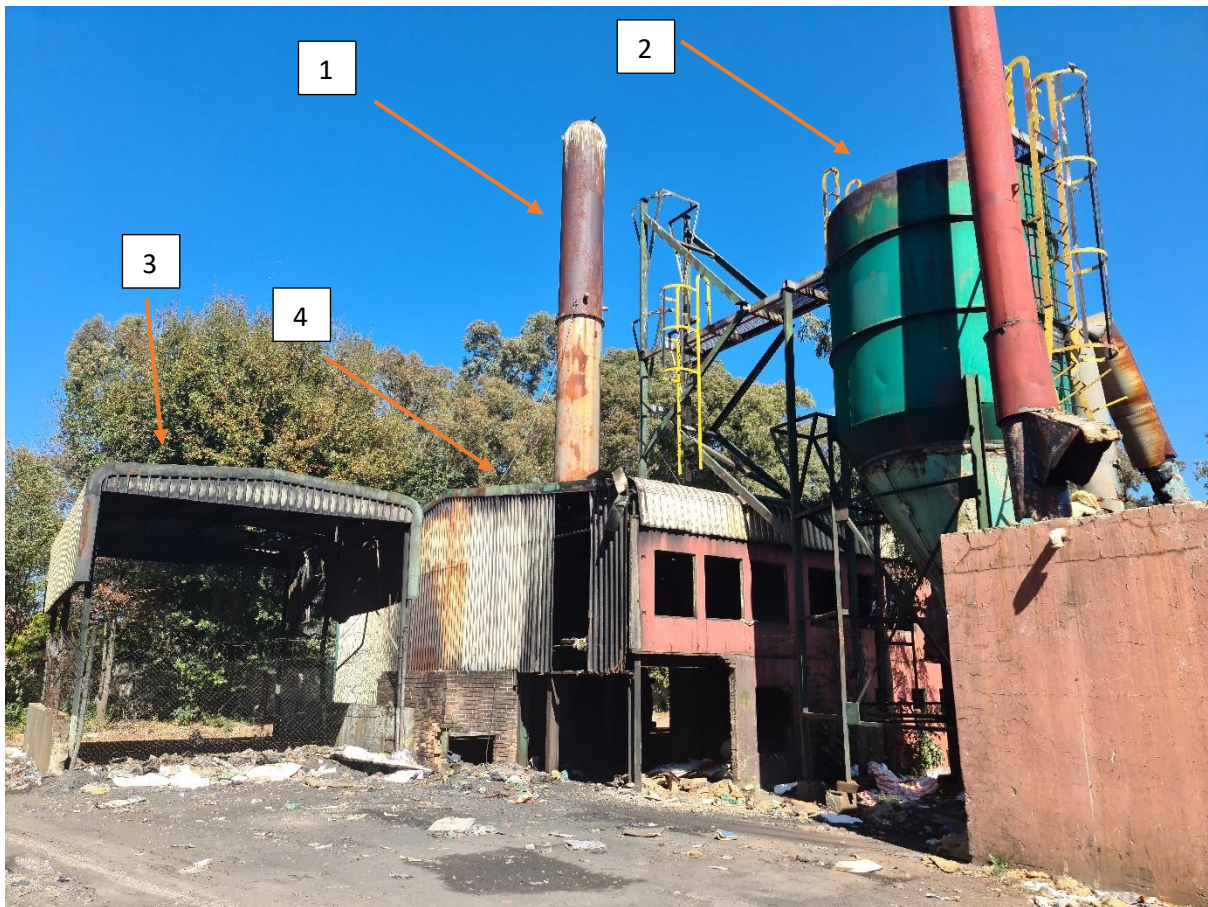
### Location

The location of the incinerator is adjacent to the Pikitup Robinson Deep landfill.  
-26.229771967008283, 28.042469059383407

### Supporting documents

See attached drawing ED002-LAY-WP2-001 for the locations of the numbered descriptions in this document.

### Site Photos



*Figure 1: Incinerator chimney (1) and flue gas treatment equipment and walkways (2) to be removed and disposed of. (3) old washbay to be demolished. (4) Main building where roof sheeting is to be removed and brick and concrete sidewalls demolished.*



*Figure 2: Inside main building. Incinerator hearth (1) to be removed and disposed of (the chimney extends upwards directly from it). Internal walls to and platform to be removed (2). Roof sheeting to be removed (3). Egoli gas connection to be undisturbed (4).*



*Figure 3: (1) and (2) are the two identical sheds that need to be stripped of roof sheeting. (2) the roller shutter door needs to be removed also. (3) a small shed that needs to be demolished.*



*Figure 4: Side view of cast concrete north wall that is to be demolished. Face brick section should also be demolished.*



*Figure 5: The red wall with the multiple window frames needs to be demolished.*



*Figure 6: Location of the underground diesel tanks that need to be excavated and removed.  
Brick paving should be retained on site for later reuse and earth filled back into the hole*



*Figure 7: Concrete fence for demolition highlighted.*



*Figure 8: Old washbay with side walls that needs to be demolished completely.*



*Figure 9: The western corner of the building showing some of the face brick wall that needs to be demolished. The red concrete wall also needs to be demolished.*



*Figure 10: Another view of the chimney and steel flue gas treatment structure and vessels that needs to be removed. The loose standing pink coloured brick building needs to remain in tact.*