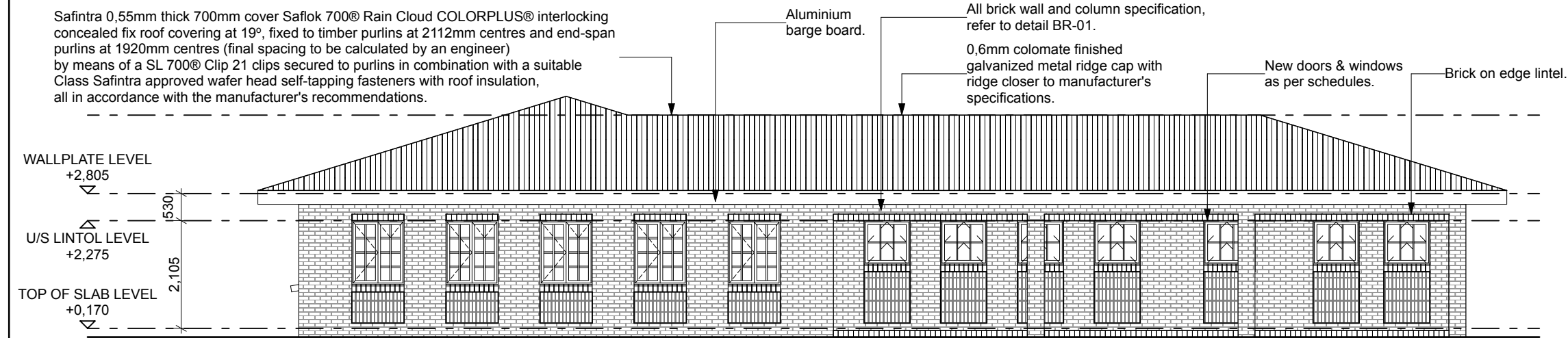
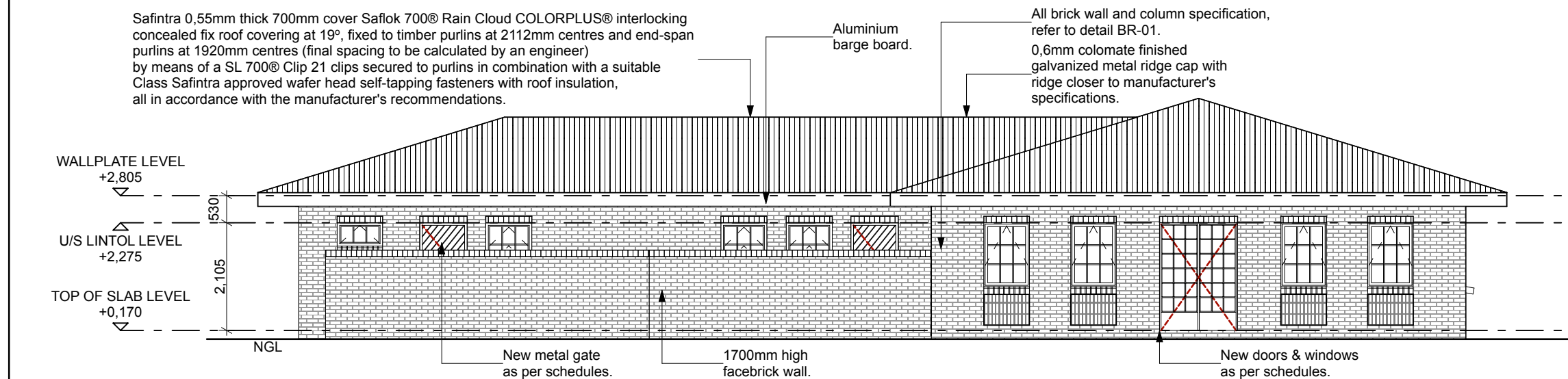


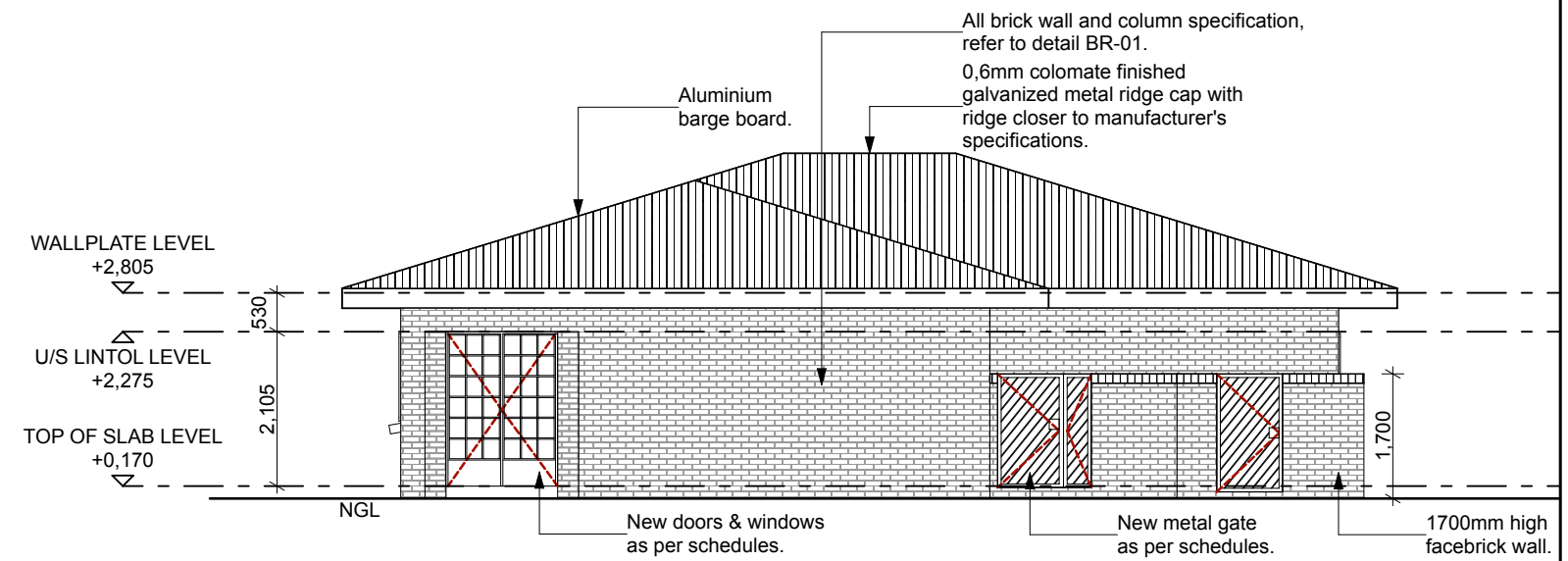
GROUND FLOOR PLAN
SCALE - 1:100



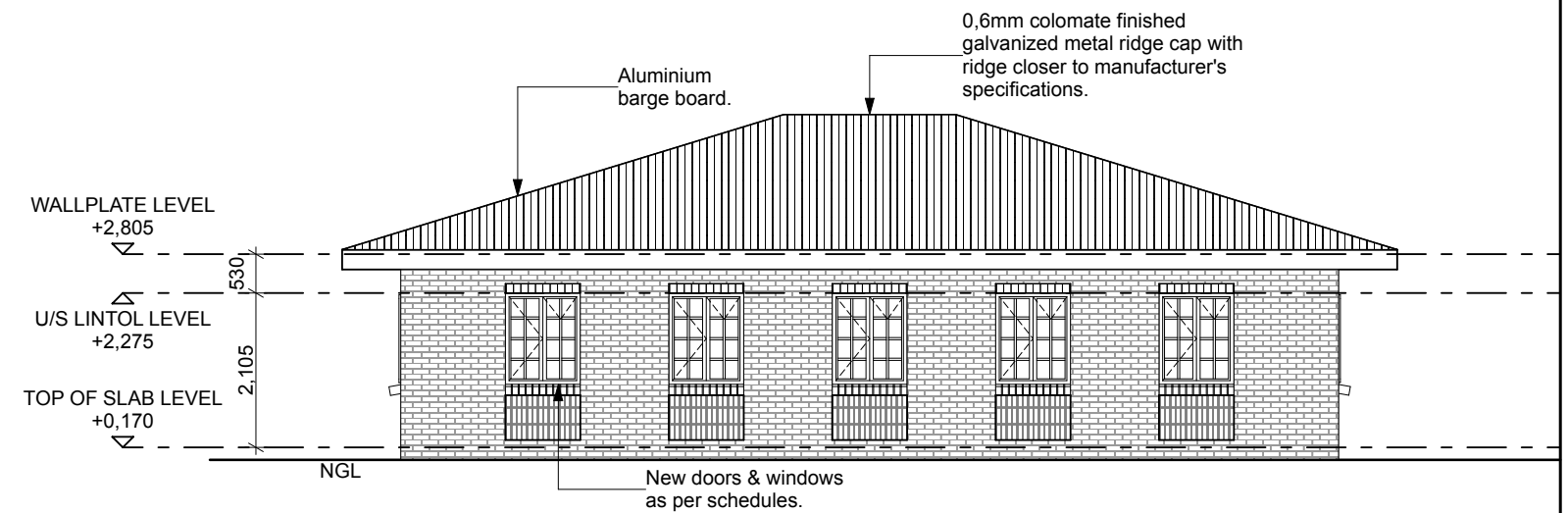
FRONT ELEVATION
SCALE - 1:100



FRONT ELEVATION
SCALE - 1:100

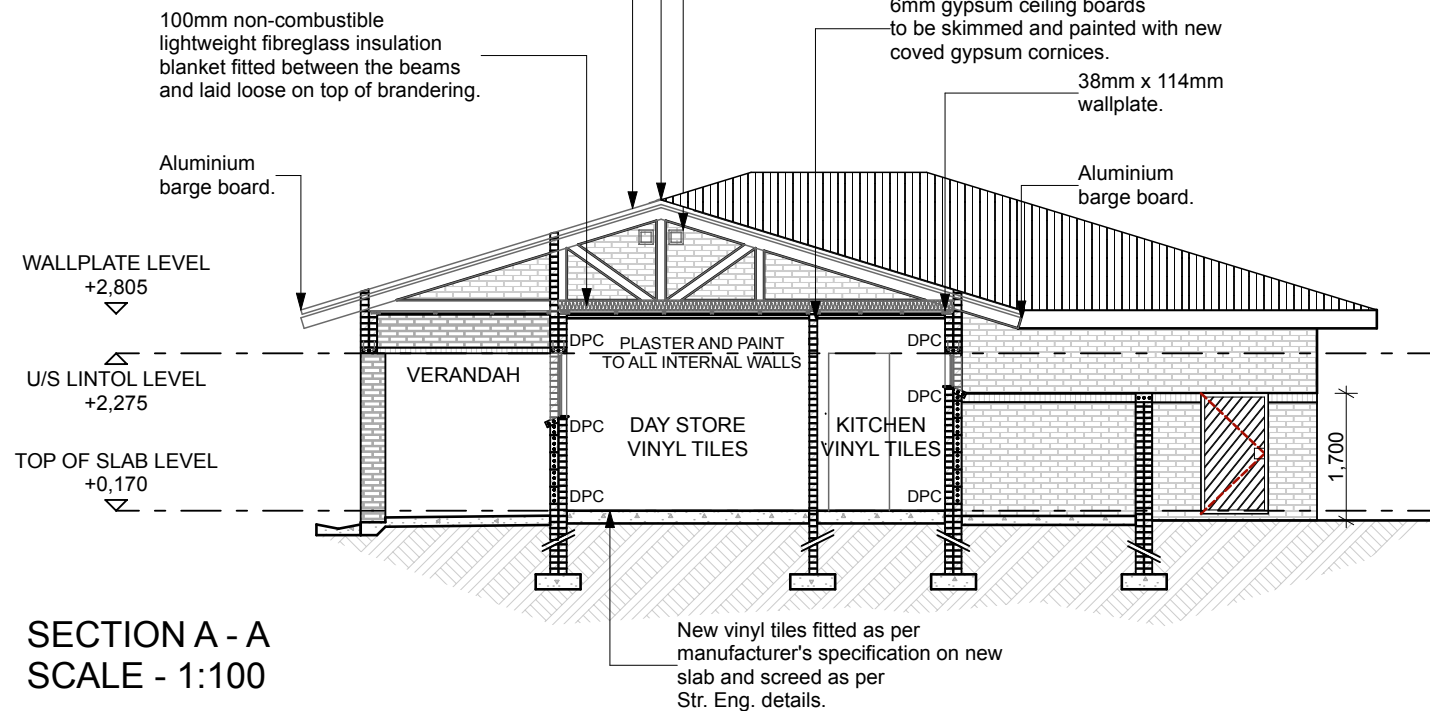


SIDE ELEVATION
SCALE - 1:100



SIDE ELEVATION
SCALE - 1:100

Safintra 0,55mm thick 700mm cover Saflok 700® Rain Cloud COLORPLUS® interlocking concealed fix roof covering at 19°, fixed to timber purlins at 2112mm centres and end-span purlins at 1920mm centres (final spacing to be calculated by an engineer) by means of a SL 700® Clip 21 clips secured to purlins in combination with a suitable Class Safintra approved wafer head self-tapping fasteners with roof insulation, all in accordance with the manufacturer's recommendations. All aspects to be in strict accordance with the manufacturer's latest published recommendations. Profile measurements and proportions must be in line with the latest Product Specification Manual as published by Safintra SA. Sheet coating: AZ150.



SECTION A - A
SCALE - 1:100

NOTES:
1. All boundaries, dimensions and levels are to be checked on site before construction and any discrepancies are to be reported to the office of the Architect.
2. Partial Service: Any discrepancies with site or other information is to be advised to the Architect and direction or approval is to be sought before the implementation of the detail.
3. Do not scale this drawing.
4. For the purpose of coordination, all relevant parties must check this information prior to implementation and report any discrepancies to the Architect.

Rev No.	Date	Description	Rev By
A	17/08/22	For Information Purposes Only	MM
B	27/08/22	Roof Design Change, Brickwork Design Change	MM

Architect :
Name :
Signature :
Client :
Name :
Signature :



Project:
**CONDITION ASSESSMENT
WESTERN HOLDINGS PRIMARY SCHOOL**

Drawing description:
**PROPOSED NEW DINING AND
NUTRITION BUILDING**

Drawn:
URBAN PLATFORM ARCHITECTS + PLANNERS
Scale: AS SHOWN ON DRAWING

FOR INFORMATION
Drawing Number: 082-WHPS-207
Revision: B