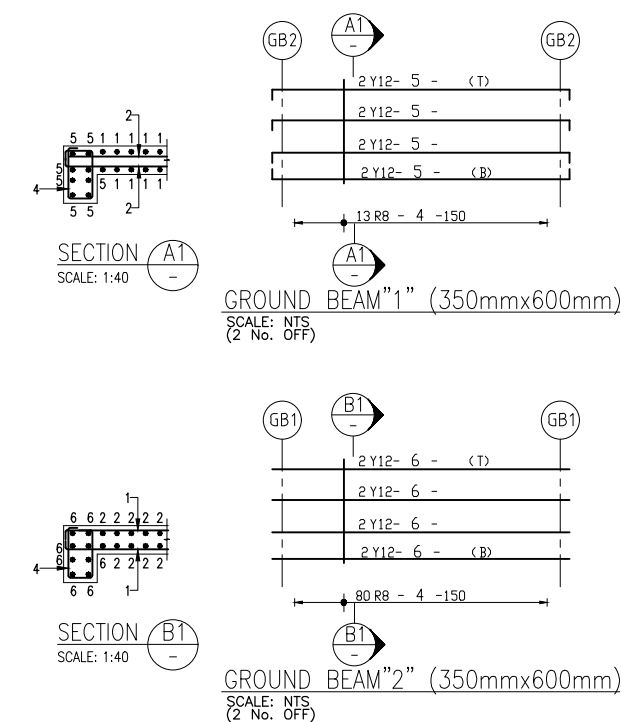


- ALL PROPRIETY PRODUCTS ARE TO BE APPLIED IN ACCORDANCE WITH THE MANUFACTURERS SPECIFICATIONS

1. EXCAVATE 1050mm THROUGH IN-SITU MATERIAL TO COMPETENT MATERIAL BELOW NATURAL GROUND LEVEL AND DISPOSE EXCAVATED MATERIAL.
2. RIP AND RE-COMPACT COMPACT IN-SITU MATERIAL TO 93% MOD. AASHTO.
3. PLACE 150mm THICK G6 MATERIAL AND COMPACT TO 95% MOD AASHTO.
4. CONSTRUCT PLINTH.
5. FOUNDING MATERIAL TO BE INSPECTED BY THE CONSULTANTS GEOTECHNICAL ENGINEERS PRIOR TO PLACING BLINDING.
6. ENGINEER WILL INSPECT FORMATION AND DECIDE TOP OF BLINDING LEVEL FOR REINFORCED FOOTINGS.



1. COVER TO REINFORCEMENT = 50mm MIN.
2. MINIMUM LAP LENGTH = 40 x BAR DIAMETER.

[illegible]

Client: \_\_\_\_\_

Discipline **CIVIL/STRUCTURAL**

WCS number

Drawing Title

12.5x2.6m CONCRETE PLINTH TO  
SUPPORT STEEL CONTAINER FOR  
GAS CYLINDERS PLAN, SECTIONS,  
DETAILS & REINFORCEMENT LAYOUT

Ref. No. .	Designed P.B. KUNUTU
Scale AS SHOWN	Drawn P.M
Date 28/02/23	Checked P.B. KUNUTU
Drawing Number	Rev
BAP243/01-02/01	0